

WESTBRASS

Luxury Plumbing - Est. 1935



2024

FINISH & PRICING GROUP CHART

STANDARD FINISHES

PRICE GROUP I



PC-Polished Chrome

SPECIAL FINISHES

PRICE GROUP II



PBP-PVD Polished Brass



PB-Polished Brass



PN-Polished Nickel



SN-Satin Nickel



AC-Antique Copper



ORB-Oil Rubbed Bronze



BB-Brushed Bronze



CG-Champagne Gold



SB-Satin Brass



SS-Stainless Steel



PCW-Powder Coat White



MW-Matte White



MB-Matte Black

* **BB**-Brushed Bronze
* **CG**-Champagne Gold
* These premium finishes are available upon request, allowing you to customize your products for a truly unique and refined look. Please contact us for more information on availability and to place your order.

These sample colors portray our finish color and texture only within the limitations of printing and photography. Further color variations from differences in base material, polishing and plating are also expected. We reserve the right to make changes and deletions in finishes and products without notice.

TABLE OF CONTENTS

KITCHENS

4IN1 & 3IN1 Kitchen Faucets	4
Dual Function Kitchen Faucet.....	5
Pull-Down Spray Kitchen Faucets	6
Instant Hot Water Dispenser Kits.....	6-9
Filter Accessories	9
Pure Water Taps	10-11
Garbage Disposal Flanges & Stoppers	12-13
Kitchen & Bar Sink Strainers.....	14
Construction Accessories	15
Air Gap Kits.....	16
Disposal Air Switches.....	17
Soap/Lotion Dispensers	18

BATHROOMS

Stops & Supplies	20-23
Round Handle IPS Angle Stop Kits	24
Cross Handle IPS Angle Stop Kits	25
Round Handle Compression Inlet Angle Stop Kits	26
Cross Handle Compression Inlet Angle Stop Kits	27
Pedestal Lavatory Kit.....	28
P-Traps with Box Flanges.....	29
Construction Accessories	30
Tubular Drain Products.....	31
Lavatory Sink Drains.....	32-34

SHOWERS

Tub & Shower Wall Cover Trims.....	36
Shower Arms with Flanges.....	37
90° Rain Shower Arms	38
Shower Heads.....	39-42
Hand Shower Accessories & Hoses.....	43
FRP Reinforced Acrylic Shower Pans	44-45
Shower Drains.....	46
Shower Drain Cover Trims	47-49

BATH TUBS

Solid Surface Bath Tubs	51
Free Standing Tubs.....	52
Acrylic & Alcove Tubs.....	52
Bath Stools.....	53-54
Gel Pillows.....	54
Tub Drains for Integrated Overflow Bath Tubs	55
Brass Tub Spouts.....	56
7 Inch Tub Spouts	57

BATH TUB WASTES & OVERFLOWS

Linear Overflow Bath Waste	59
Linear Overflow Low Profile	60
Deep Soak Drains.....	61-62
Semi-Exposed Brass Bath Waste.....	63
Illusionary Brass Bath Waste & Overflow	64
Illusionary Sch. 40 Waste & Overflows	65
All Exposed Illusionary Brass Bath Waste	66
Solder In Waste & Overflows.....	67
Specialty Brass Bath Waste & Overflow.....	68
Twist & Close Bath Waste & Overflow	69-70
Trip Lever Bath Waste & Overflow	71-74
Tip-Toe Bath Waste & Overflow	73-74
Pull & Drain Bath Waste & Overflow	75-76
Black Tubular Bath Waste & Overflow.....	77
White Tubular Bath Waste & Overflow.....	78
ABS Bath Waste & Overflow	79
PVC Bath Waste & Overflow	80
Bath Waste & Overflow Trim Kits.....	81-82
Bath Tub Strainers.....	83-84
Bath Waste & Overflow Trim Kits.....	85-86
Illusionary Overflow Plumber's Packs	87
PVC & ABS Plumber's Packs.....	88
Bath Waste & Overflow	89
ABS Cable Drive Bath Waste & Overflows.....	90
PVC Cable Drive Bath Waste & Overflows	91
Poly - Cable Drive Bath Waste & Overflows.....	92



S
N
E
T
C
H
K
I
T
C
H
E
N

4IN1 & 3IN1 KITCHEN FAUCETS

4IN1 DIGIHOT APPLIANCE KIT

KSF4000DHAK

- Pull-down adjustable spray hand shower
- Zero clearance rotary valve mixer handle
- Rotate left handle backwards for pure water
- Pull button, rotate forward for instant hot
- Exceeds AB1953/NSF lead regulations
- Requires 3/8" comp. water supply connections
- Includes 2 ea. filters
- Includes HotMaster DIGIHot tank unit
- UL registered CSA-C22.2

PC: \$1,634
 Special Finishes: \$1,694

Available Finishes:

- Standard Finish
 ■ PC
- Special Finishes
 ■ ORB
 ■ SS
 ■ MB



4IN1 KITCHEN APPLIANCE ACCESSORY KIT

KSF4001DHAK

- Pull-down adjustable appliance
- DIGIHot digital tank
- 2 ea. Carbon Block Filters
- Includes dishwasher air gap
- Includes disposal air switch
- Includes soap/lotion dispenser

PC: \$1,918
 Special Finishes: \$2,068

Available Finishes:

- Standard Finish
 ■ PC
- Special Finishes
 ■ ORB
 ■ SS
 ■ MB



3IN1 DIGIHOT SINGLE HANDLE KITCHEN

KSF3000DHAK

- Single handle kitchen faucet adjustable volume and temperature
- Spout swivels 360 degrees
- Trouble-free patented installation scheme
- Dual waterway design isolates pure hot water from dish water
- Press safety button to rotate handle to make Instant Hot water
- Includes DIGIHot DT18 digital tank unit
- Includes water filter
- Requires 3/8 in. compression valves

PC: \$1,209
 Special Finishes: \$1,301

Available Finishes:

- Standard Finish
 ■ PC
- Special Finishes
 ■ ORB
 ■ SS
 ■ MB



3IN1 DIGIHOT APPLIANCE WITH ACCESSORIES

KSF3001DHAK

- 3in1 single handle appliance
- DIGIHot digital tank
- Carbon Block Filter
- Includes dishwasher air gap
- Includes disposal air switch
- Includes soap/lotion dispenser

PC: \$1,493
 Special Finishes: \$1,676

Available Finishes:

- Standard Finish
 ■ PC
- Special Finishes
 ■ ORB
 ■ SS
 ■ MB



DUAL FUNCTION KITCHEN FAUCET

DUAL SENSOR AUTOMATIC TOUCH KITCHEN FAUCET

KSF2000DSTF

- Pull wand to turn faucet on
- Wave hand in front of faucet to start
- Wave hand again to stop
- ADA compliant handle
- Allows manual or automatic operation
- Requires 3/8 in. compression valves
- Exceeds AB 1953 lead regulations
- Requires 4-AA Batteries for operation (Not Included)

PC: \$580
 Special Finishes: \$640

Available Finishes:

Standard Finish
 PC

Special Finishes

ORB
 SS
 MB



PULL-DOWN SPRAY KITCHEN FAUCETS

PULL-DOWN SPRAY SINGLE HANDLE WITH PLATE

KSF1000PD

- Pull-down spray kitchen faucet
- Single handle ceramic disk valve
- Wand toggles between spray and stream
- 3/8 in. compression supply lines
- Quiet, fiber reinforced pull-down hose
- ADA compliant stylish handle
- Lead free non-metallic waterways
- Use for 1 or 3-hole installations
- Requires 1-3/8 in. sink hole

PC: \$265
 Special Finishes: \$301

Available Finishes:

Standard Finish
 PC

Special Finishes

ORB
 SS
 MB
 SS/MB
 MB/SS
 PC/MB
 MB/PC



SPRING SPOUT SINGLE HANDLE SPRAY WITH PLATE

KSF1001SS

- Single handle kitchen faucet
- Neoperl and AntiCalc adjustable spray
- Wand toggles between spray and stream
- 3/8 in. compression supply lines
- Quiet, fiber reinforced pull-down hose
- ADA compliant handles
- Ceramic disc cartridge
- Lead free nonmetallic waterways
- Use for 1 or 3-hole installations
- Requires 1-3/8 in. sink hole

PC: \$324
 Special Finishes: \$362

Available Finishes:

Standard Finish
 PC

Special Finishes

ORB
 SS
 MB
 SS/MB
 MB/SS
 PC/MB
 MB/PC
 SS/MB
 MB/SS
 PC/MB
 MB/PC



INSTANT HOT WATER DISPENSER KITS

HOT WATER DISPENSER KIT

IHD1700

- Single handle hot water dispenser & tank
- With ShokBlok valve
- Traditional styling
- Auto-off handle function
- Santoprene hot water tube
- 1/4 in. flexible supply lines
- 5/8 gallon tank with 60 cups/hour delivery

PC \$1,128
Special Finishes: \$1,194

Available Finishes:

Standard Finish
■ PC

Special Finishes

■ PBP
■ PN
■ AC
■ SN
■ ORB
■ SS



IHDADD

- Add filter and digital tank

PC: \$1,279
Special Finishes: \$1,440

HOT/COLD WATER DISPENSER KIT

IHD1702

- Two handle hot/cold water dispenser & tank
- With ShokBlok valve
- Traditional styling
- Auto-off hot and locking cold handles
- Santoprene hot water tube
- 1/4 in. flexible supply lines
- 5/8 gallon tank with 60 cups/hour delivery

PC: \$1,248
Special Finishes: \$1,289

Available Finishes:

Standard Finish
■ PC

Special Finishes

■ PBP
■ PB
■ PN
■ AC
■ SN
■ SS
■ MB



IHDADD

- Add filter and digital tank

PC: \$1,399
Special Finishes: \$1,439

HOT WATER DISPENSER KIT

IHD1705

- Single handle hot water dispenser & tank
- With ShokBlok valve
- Contemporary styling
- Auto-off handle function
- Santoprene hot water tube
- 1/4" flexible supply lines
- 5/8 gallon tank with 60 cups/hour delivery

Polished Chrome: \$1,125
Special Finishes: \$1,194

Available Finishes:

Standard Finish
■ PC

Special Finishes

■ PN
■ AC
■ SN
■ ORB
■ SS
■ MB



IHDADD

- Add filter and digital tank

PC: \$1,275
Special Finishes: \$1,344

INSTANT HOT WATER DISPENSER KITS

HOT/COLD WATER DISPENSER KIT

IHD1700

- Two handle hot/cold water dispenser & tank
- With ShokBlok valve
- Contemporary styling
- Auto-off hot and locking cold handles
- Santoprene hot water tube
- 1/4" flexible supply lines
- 5/8 gallon tank with 60 cups/hour delivery

PC: \$1,248

Special Finishes: \$1,289

IHDADD

- Add filter and digital tank

PC: \$1,399

Special Finishes: \$1,440

Available Finishes:

Standard Finish
■ PC

Special Finishes
■ PN
■ AC
■ SN
■ ORB
■ SS
■ MB



HOT WATER DISPENSER KIT

IHD1702

- 5-1/2" spout projection, 9-1/4" overall height
- With Shock Block valve
- Single lever handle, hot water faucet
- 1-3/8" hole size
- 1/4-turn ceramic disc cartridge
- Includes QHT-1 hot water tank
- Solid brass faucet with stainless steel tank

Polished Chrome: \$1,171

Special Finishes: \$1,307

IHDADD

- Add filter and digital tank

PC: \$1,321

Special Finishes: \$1,458

Available Finishes:

Standard Finish
■ PC

Special Finishes
■ PN
■ SN
■ ORB
■ SS
■ MB



HOT/COLD WATER DISPENSER KIT

HD1705

- 5-1/2" spout projection, 9-1/4" overall height
- With Shock Block valve
- Dual lever handle, hot & cold water faucet
- 1-3/8" hole size
- 1/4-turn ceramic disc cartridges
- Includes QHT-1 hot water tank
- IWC-1 chiller is optional
- Solid brass faucet with stainless steel tank

Polished Chrome: \$1,302

Special Finishes: \$1,482

IHDADD

- Add filter and digital tank

Polished Chrome: \$1,279

Special Finishes: \$1,463

Available Finishes:

Standard Finish
■ PC

Special Finishes
■ PBP
■ PN
■ SN
■ ORB
■ SS
■ MB



INSTANT HOT WATER DISPENSER KITS

CONTEMPORARY HOT WATER DISPENSER KIT

HD1755

- 5" spout projection, 10-3/4" overall height
- With Shock Block valve
- Single lever handle
- 1-3/8" hole size
- 1/4-turn ceramic disc cartridge
- Includes QHT-1 hot water tank
- Solid brass faucet with stainless steel tank

PC: \$1,171
Special Finishes: \$1,307

Available Finishes:

Standard Finish
■ PC

Special Finishes
■ PN
■ SN
■ ORB
■ SS
■ MB



IHDADD

- Add filter and digital tank

PC: \$1,321
Special Finishes: \$1,458

CONTEMPORARY HOT/COLD WATER DISPENSER KIT

IHD1762

- 4" spout projection, 10-5/8" overall height
- With Shock Block valve
- Dual lever handles
- 1-3/8" hole size
- 1/4-turn ceramic disc cartridges
- Includes QHT-1 hot water tank
- IWC-1 chiller is optional
- Solid brass faucet with stainless steel tank

PC: \$1,256
Special Finishes: \$1,368

Available Finishes:

Standard Finish
■ PC

Special Finishes
■ PBP
■ PN
■ SN
■ ORB
■ SS
■ MB



IHDADD

- Add filter and digital tank

PC: \$1,407
Special Finishes: \$1,5189

CONTEMPORARY HOT/COLD WATER FAUCET KIT

IHD1799

- 3-1/4 in. spout projection, 10-5/8 in. overall height
- ADA approved lever handle controls hot and cold, dish water
- Fits in 1-3/8 in. hole size
- Lever operated instant hot switch, prevents tender hands from inadvertent scalding
- Includes QHT-1 hot water tank with ShokBlok valve
- Swivel spout for easy access to pots and pans
- Solid brass faucet with stainless steel tank
- F400 filter included for purified hot water

PC: \$1,190

Available Finishes:

Standard Finish
■ PC



INSTANT HOT WATER DISPENSER KITS

QUICK HEATING TANK - ENAMELED - SHOCK BLOCK

IHDQHT

- Quick & Hot instant hot water tank
- With Shock Block valve
- 5/8 gallon stainless steel tank
- 1300 Watts - delivers up to 100 cups per hour
- Plugs into standard (115V) wall outlet
- 140° - 190° fingertip temperature adjustable
- Required for all hot or hot/cold water dispensers

\$627



HOTMASTER DIGIHoT DIGITAL TANK UNIT

IHDDHT

- Instant hot water tank
- With ShokBlok valve
- 5/8 gallon stainless steel tank
- 1500 Watts - delivers up to 100 cups per hour
- Plugs into standard (115V) wall outlet
- 167° - 208° temperature adjustable
- Required for hot or hot/cold water dispensers

\$647



FILTER ACCESSORIES

CARBON BLOCK FILTER

IHDCBF

- Filter housing and mounting bracket
- With carbon block antibacterial filter medium
- Economical element replacement
- Save Landfill - only replace cartridge without disposing of the plastic housing
- Anti-scale filter treatment
- Quick connect cartridge housing removal
- Filter lasts 6 months or 2000L of water

\$164



REPLACEMENT CARBON BLOCK FILTER CARTRIDGES

IHDCBFR

- Replacement filter element for IHDCBF
- Pair of replacement filter cartridges for 1 year's worth of filtration or 4000L of water

\$143



SHOKBLOK FAUCET AND FILTER PROTECTION

- Regulates water to 40 psi water
- Creates water hammer protection
- Designed for filters, ice makers, coffee and espresso machines and instant hot appliances
- Extends life of appliance by reducing water hammer

IHDSFF38

- Acetyl body with 3/8 in. insert fittings

\$24

IHDSFF14

- Acetyl body with 1/4 in. insert fittings

\$24



PURE WATER TAPS

6" TOUCH-FLO PURE WATER DISPENSER

TF300

- Touch-Flo style pure water faucet
- 2-5/8" spout projection
- 6-1/2" overall height
- 1/4" compression tube inlet
- Single black plastic handle
- Spring piston handle assembly
- Cannot be installed with hot water tank
- Brass construction

PC: \$113
Special Finishes: \$162

Available Finishes:

- Standard Finish
■ PC
- Special Finishes
■ PBP
■ PB
■ PN
■ SN
■ AC
■ ORB
■ SS
■ PCW
■ MB



45° TOUCH-FLO PURE WATER DISPENSER

TF301

- Touch-Flo style pure water faucet
- 5-1/2" 45-degree extended spout projection
- 8" overall height
- 1/4" compression tube inlet
- Spring piston handle assembly
- Cannot be installed with hot water tank
- Brass construction

PC: \$118
Special Finishes: \$179

Available Finishes:

- Standard Finish
■ PC
- Special Finishes
■ PBP
■ PB
■ PN
■ SN
■ AC
■ ORB
■ PCW
■ MB



CLASSIC LEVER HANDLE COLD WATER DISPENSER

TF303

- Ceramic disc pure water faucet
- 10" classic lever handle design
- 1/4" compression tube inlet
- 1/4-turn ceramic disc cartridge
- Cannot be installed with hot water tank
- Brass construction

PC: \$244
Special Finishes: \$326

Available Finishes:

- Standard Finish
■ PC
- Special Finishes
■ PBP
■ PB
■ PN
■ SN
■ AC
■ ORB
■ PCW
■ MB



VICTORIAN 1-LEVER HANDLE COLD WATER DISPENSER FAUCET

TF305

- Victorian single lever handle cold water dispenser faucet. 9 in. Overall height with 5 in. gooseneck spout projection
- Gooseneck spout projection
- Solid brass construction
- Can be installed with water filter and/or in-line chiller; cannot be modified to use with hot water tank
- Single lever handle with 1/4-turn ceramic disc cartridge. 1/4 in. Compression tube inlet
- Do not use plumber's putty for installation. For installation use only silicone seal.

PC: \$299
Special Finishes: \$399

Available Finishes:

- Standard Finish
■ PC
- Special Finishes
■ PBP
■ PB
■ PN
■ SN
■ AC
■ ORB
■ PCW
■ MB



CONTEMPORARY COLD WATER DISPENSER

TF309

- 5 in. spout projection, 11-1/4 in. height
- Single lever handle, cold water faucet
- 1/4" compression tube inlet
- 1/4-turn ceramic disc cartridge
- Cannot be installed with hot water tank
- Brass construction

PC: \$244

Special Finishes: \$326

Available Finishes:

Standard Finish

■ PC

Special Finishes

■ PBP

■ PB

■ PN

■ SN

■ AC

■ ORB

■ PCW

■ MB



CONTEMPORARY COLD WATER EXTENSION

TFADAPT

- 3 in. spout extension for thicker counter tops
- 1/4" compression tube inlet

PC: \$30

Available Finishes:

Standard Finish

■ PC



GARBAGE DISPOSAL FLANGES & STOPPERS

DISPOSAL FLANGE & STOPPER

DF111

- ISE style disposal trim set
- Flange and stopper
- 1-5/8" deep flange
- Fits most ISE™, Emerson™, Kenmore™, Joneca™ and Grainger™ waste disposals
- Brass construction

PC: \$74
Special Finishes: \$95

Available Finishes:

Standard Finish

■ PC

Special Finishes

■ PBP

■ PB

■ PN

■ SN

■ AC

■ ORB

■ SS

■ PCW

■ MB

■ BB

■ CG



MOUNT DISPOSAL FLANGE & STOPPER

DF112

- ISE style disposal trim set
- Flange and strainer
- 1-5/8" deep flange
- Fits most ISE™, Emerson™, Kenmore™, Joneca™ and Grainger™ waste disposals
- Push/pull removable stopper strainer

PC: \$111
Special Finishes: \$170

Available Finishes:

Standard Finish

■ PC

Special Finishes

■ PBP

■ PB

■ PN

■ SN

■ PCW

■ ORB

■ MB



EXTRA DEEP ISE DISPOSAL FLANGE & STOPPER

DF113

- ISE style extra deep disposal trim set
- Flange and stopper
- 2-5/8" deep flange
- Fits most ISE™, Emerson™, Kenmore™, Joneca™ and Grainger™ waste disposals
- Brass construction

PC: \$88
Special Finishes: \$107

Available Finishes:

Standard Finish

■ PC

Special Finishes

■ PBP

■ PB

■ PN

■ SN

■ ORB

■ SS

■ PCW

■ MB



EXTRA DEEP ISE DISPOSAL FLANGE & STRAINER

DF115

- ISE style extra deep disposal trim set
- Flange and strainer
- 2-5/8" deep flange
- Fits most ISE™, Emerson™, Kenmore™, Joneca™ and Grainger™ waste disposals
- Removable stopper for easy cleaning

PC: \$129
Special Finishes: \$198

Available Finishes:

Standard Finish

■ PC

Special Finishes

■ PBP

■ PB

■ PN

■ SN

■ SS

■ PCW

■ ORB

■ MB



DISPOSAL STOPPER FOR 3-BOLT MOUNT FLANGES

DF110

- ISE style disposal topper only
- Fits most ISE™, Emerson™, Kenmore™, Joneca™ and Grainger™ waste disposals
- Brass construction

PC: \$29
Special Finishes: \$49

Available Finishes:

Standard Finish

■ PC

Special Finishes

■ PBP

■ PB

■ PN

■ SN

■ AC

■ ORB

■ SS

■ PCW

■ MB



GARBAGE DISPOSAL FLANGES & STOPPERS

EZ-MOUNT DISPOSAL FLANGE & STOPPER

DF117

- Waste King style brass disposal trim set
- Flange and strainer
- Fits sinks up to 1 inch thick
- Fits continuous feed units from Waste King™, G.E.™, Eliminator™, Frigidaire™, Tappan™, Whirlaway™, Joneca™, Commodore™, Titan™, Waste Made™, and Westinghouse™ disposals

PC: \$129
Special Finishes: \$198

Available Finishes:

Standard Finish
■ PC

Special Finishes

■ PBP
■ SN
■ AC
■ PCW
■ ORB
■ SS
■ MB



LOG LIGHTER TRIM KIT

LLT

- Log lighter key and flange
- Arrowhead brass style
- 5/16" square key size
- 2-1/2" key length
- Fits 3/4" NPSM valve bodies

PC: \$72
Special Finishes: \$98

Available Finishes:

Standard Finish
■ PC

Special Finishes

■ PB
■ PN
■ SN
■ ORB
■ MB



KITCHEN & BAR SINK STRAINERS

WING NUT BASKET STRAINER

BS121

- Large wing nut style kitchen sink strainer
- Brass nuts and washers included
- Fits 3-1/2" opening - 4-3/8" rim diameter
- 2-9/16" tall
- Solid brass construction
- Turn wing nut to restrict draining

PC: \$123
Special Finishes: \$146

Available Finishes:

Standard Finish
■ PC

Special Finishes

■ PBP
■ PN
■ SN
■ AC
■ ORB
■ SS
■ PCW
■ MB



POST BASKET STRAINER

BS122

- Large post style kitchen sink basket strainer
- Brass nuts and washers included
- Fits 3-1/2" opening - 4-3/8" rim diameter
- 2-9/16" tall
- Solid brass construction
- Turn post and push to restrict draining

PC: \$115
Special Finishes: \$134

Available Finishes:

Standard Finish
■ PC

Special Finishes

■ PBP
■ PB
■ PN
■ SN
■ AC
■ ORB
■ SS
■ PCW
■ MB



KITCHEN & BAR SINK STRAINERS

PLASTIC BASKET STRAINER

BS120

- Large polypropylene post style kitchen sink basket and strainer
- All sink basket and strainer
- Fits 3-1/2" opening - 4-3/8" rim diameter

All Finishes: \$66
Special Finishes: \$66

Available Finishes:

Standard Finish
■ PC

Special Finishes

■ PB
■ SN
■ PCW
■ ALMD
■ B
■ BSK



JUNIOR BASKET STRAINER

BS123

- Junior basket strainer for bar sink
- Brass basket, nuts and washers included
- Fits 2-1/4" opening - 2-15/16" rim diameter
- 2-5/8" tall
- Solid brass

PC: \$66
Special Finishes: \$85

Available Finishes:

Standard Finish
■ PC

Special Finishes

■ PBP
■ PB
■ PN
■ SN
■ AC
■ ORB
■ PCW
■ MB



MIDGET DUO POST STRAINER

BS124

- Midget duo basket strainer for bar sink
- Post style basket, nuts and washers included
- Fits 2-1/4" opening
- 2-7/8" rim diameter
- 1-3/8" tall brass construction

PC \$52
Special Finishes: \$72

Available Finishes:

Standard Finish
■ PC

Special Finishes

■ PBP
■ PB
■ PN
■ SN
■ AC
■ ORB
■ PCW
■ MB



GRID STYLE JUNIOR BASKET STRAINER

BS125

- Junior grid strainer for bar sink
- Brass snap in grid
- Fits 2-1/4" opening
- 2-15/16" rim diameter
- 2-5/8" tall
- Solid brass

PC: \$62
Special Finishes: \$82

Available Finishes:

Standard Finish
■ PC

Special Finishes

■ PBP
■ PB
■ PN
■ SN
■ ORB
■ SS
■ PCW
■ MB



EASY CONNECT STAINLESS STEEL BASKET STRAINER

BS12

- Large push style kitchen sink strainer
- Brass slip joint nuts and washers included
- Fits 3-1/2" opening
- 4-1/2" rim diameter
- Stainless Steel construction

SS: \$25

Available Finishes:

Standard Finish
■ SS



DOUBLE CUP CHROME BASKET STRAINER

BS127

- Large push style kitchen sink strainer
- Zinc slip joint nuts and washers included
- Fits 3-1/2" opening
- 4-1/2" rim diameter
- Stainless Steel construction

SS: \$29

Available Finishes:

Standard Finish
■ SS



CONSTRUCTION ACCESSORIES

1/2" COPPER PIPE SURE GRIP FLANGE

PF445

- Low pattern flange
- For 1/2 in. copper pipe 5/8 in. OD
- Steel stamped
- 2-1/2 in. exterior diameter

PC: \$7
Special Finishes: \$20

Available Finishes:

Standard Finish
■ PC

Special Finishes

■ PBP
■ PB
■ PN
■ SN
■ AC
■ ORB
■ SS
■ PCW
■ MB



1/2" IPS SURE GRIP FLANGE

PF446

- Low pattern flange
- For 1/2 in. IPS brass or galvanized pipe
- Steel stamped
- 2-1/2 in. exterior diameter

PC: \$7
Special Finishes: \$20

Available Finishes:

Standard Finish
■ PC

Special Finishes

■ PBP
■ PN
■ SN
■ AC
■ ORB
■ SS
■ PCW
■ MB



1/2" IPS SURE GRIP BELL FLANGE

PF447

- Bell pattern flange
- For 1/2 in. IPS brass or galvanized pipe
- Steel stamped
- 2-1/2 in. exterior diameter

PC: \$15
Special Finishes: \$21

Available Finishes:

Standard Finish
■ PC

Special Finishes

■ PB
■ SN
■ ORB
■ SS
■ MB



1/2" COPPER PIPE SURE GRIP FLANGE

PF448

- Bell pattern flange
- For 1/2 in. copper pipe 5/8 in. OD
- Steel stamped
- 2-1/2 in. exterior diameter

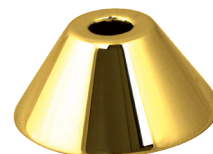
PC: \$15
Special Finishes: \$21

Available Finishes:

Standard Finish
■ PC

Special Finishes

■ PBP
■ PB
■ SN
■ ORB
■ SS
■ MB



AIR GAP KITS

AIR GAP KIT WITH STANDARD BRASS CAP

AG100

- Standard air gap cap with plastic body included
- 1-5/8" cap diameter
- 2-1/4" cap height
- 9" overall height with plastic body
- Stamped brass cap with plastic body

PC: \$29
Special Finishes: \$44

Available Finishes:

Standard Finish
■ PC

Special Finishes

■ PBP
■ PB
■ PN
■ SN
■ AC
■ ORB
■ SS
■ PCW
■ MB



AIR GAP KITS

STANDARD BRASS AIR GAP ONLY

AG101

- Standard air gap cap only
- 1-5/8" cap diameter
- 2-1/4" cap height
- Stamped brass

PC: \$23

Special Finishes: \$29

Available Finishes:

Standard Finish
■ PC

Special Finishes

■ PBP
■ PB
■ PN
■ SN
■ AC
■ ORB
■ SS
■ PCW
■ MB



AIR GAP KIT WITH SKIRTED BRASS CAP

AG102

- Heavy duty air gap cap with plastic body included
- 1-3/4" cap diameter and 2-3/4" cap height
- 9" overall height with plastic body
- Cap covers entire air gap body and installs flush to sink to sink
- Hides nut on sink for a cleaner finish

PC: \$39

Special Finishes: \$49

Available Finishes:

Standard Finish
■ PC

Special Finishes

■ PBP
■ PB
■ PN
■ SN
■ AC
■ BB
■ CG
■ ORB
■ SS
■ PCW
■ MB



SKIRTED BRASS AIR GAP CAP ONLY

AG103

- 1-3/4" cap diameter
- 2-3/4" cap height
- Fits all standard air gap bodies
- Cap covers entire air gap body to install flush to sink
- Hides nut on sink

PC: \$35

Special Finishes: \$41

Available Finishes:

Standard Finish
■ PC

Special Finishes

■ PB
■ PN
■ SN
■ AC
■ ORB
■ SS
■ PCW
■ MB



PLASTIC AIR GAP KIT WITH CAP

AG104

- Plastic air gap cap with plastic body included
- 1-3/4" cap diameter and 2-3/4" cap height
- 9" overall height with plastic body

All Finishes: \$16

Available Finishes:

Standard Finish
■ PC

Special Finishes

■ W
■ ALMD



SINK HOLE COVER

HC105

- Heavy brass top disk
- Solid 2" threaded rod with wing nut
- Reversible washer fits thin or thick sinks
- 2" cover diameter
- Covers unused sink holes
- Low profile easier to clean than deck plates

PC: \$16

Special Finishes: \$29

Available Finishes:

Standard Finish
■ PC

Special Finishes

■ PBP
■ PB
■ PN
■ SN
■ AC
■ BB
■ CG
■ ORB
■ SS
■ PCW
■ MB



DISPOSAL AIR SWITCHES

AIR SWITCH & SINGLE OUTLET CONTROL BOX

AS110

- Sink top disposal switch
- Single outlet remote on/off switch
- Heavy duty button and flange
- No-shock control box and 6 foot hose
- Improves safe disposal operation
- Eliminates shock hazard

PC: \$146
Special Finishes: \$179

Available Finishes:

Standard Finish
■ PC

Special Finishes

■ PBP
■ PB
■ PN
■ SN
■ AC
■ CG
■ BB
■ SS



AIR SWITCH & DUAL OUTLET CONTROL BOX

AS130

- Sink top disposal switch
- Dual outlet remote on/off switch
- Heavy duty button and flange
- Control box toggles between two outlets
- Improves safe disposal operation
- Eliminates shock hazard

PC: \$162
Special Finishes: \$211

Available Finishes:

Standard Finish
■ PC

Special Finishes

■ PBP
■ PB
■ PN
■ SN
■ AC
■ BB
■ CG
■ SS
■ PCW



RAISED BUTTON AIR SWITCH & DUAL OUTLET BOX

AS132

- Sink top disposal switch
- Dual outlet remote on/off switch
- Heavy duty button and flange
- Control box toggles between two outlets
- Eliminates shock hazard for safe disposal operation
- Raised button makes operation easier
- ADA compliant

PC: \$205
Special Finishes: \$236

Available Finishes:

Standard Finish
■ PC

Special Finishes

■ PBP
■ PB
■ PN
■ SN
■ AC
■ SS
■ PCW
■ BB



REPLACEMENT AIR SWITCH TRIM

AS133

- Garbage disposal air bellows and trim
- Metal button and flange
- 3" shaft fits 2-1/2" thick decks
- Replaces most manufacturers including: Franke™, In-Sink-Erator™, G.E.™, and Waste King™

PC: \$72
Special Finishes: \$103

Available Finishes:

Standard Finish
■ PC

Special Finishes

■ PBP
■ PB
■ PN
■ SN
■ AC
■ CG
■ BB
■ SS



RAISED BUTTON REPLACEMENT AIR SWITCH TRIM

AS134

- Garbage disposal air bellows and trim
- Heavy duty button and flange
- Raised button makes operation easier
- 3" shaft fits 2-1/2" thick decks
- Replaces most manufacturers including: Franke™, In-Sink-Erator™, G.E.™, and Waste King™
- ADA compliant

PC: \$95
Special Finishes: \$131

Available Finishes:

Standard Finish
■ PC

Special Finishes

■ PBP
■ PB
■ PN
■ SN
■ AC
■ CG
■ BB
■ SS



SOAP/LOTION DISPENSERS

STANDARD SOAP/LOTION DISPENSER

SD140

- Standard style soap and lotion dispenser
- 3" dispenser height
- 2-1/2" center-to-center spout
- 1-3/8" sink hole size
- 12 oz. plastic bottle included
- Solid brass head & body with plastic pump

PC: \$75
 Special Finishes: \$100

Available Finishes:

Standard Finish

■ PC

Special Finishes

■ PBP

■ PB

■ PN

■ SN

■ AC

■ SS

■ PCW

■ ORB

■ MB



HEAVY DUTY SOAP/LOTION DISPENSER

SD142

- Heavy duty style soap and lotion dispenser
- 2-1/4" dispenser height
- 3-1/2" center-to-center spout
- 1-3/8" sink hole size
- 12 oz. plastic bottle included
- Solid brass head & body with plastic pump

PC: \$177
 Special Finishes: \$208

Available Finishes:

Standard Finish

■ PC

Special Finishes

■ PBP

■ PB

■ PN

■ SN

■ AC

■ CG

■ BB

■ SS

■ PCW

■ ORB

■ MB



BATHROOMS



STOPS & SUPPLIES

STRAIGHT STOP, 1/2" COPPER SWEAT WITH BELL

SS 510 (SS510X - Cross Handle)

- 1/2" nominal copper sweat inlet
- 3/8" OD compression outlet
- 11/16" ID bell flange included

PC: \$82 (SS510X - \$134)
 Special Finishes: \$115 (SS510X - \$167)

Available Finishes:

Standard Finish
 ■ PC

Special Finishes

■ PBP
 ■ PB
 ■ PN
 ■ SN
 ■ PCW
 ■ ORB
 ■ MB



1/2" IPS PIPE NIPPLES

PN1204

- 1/2" x 4" IPS Pipe Nipple

PC: \$28
 Special Finishes: \$36

PN1206

- 1/2" x 6" IPS Pipe Nipple

PC: \$38
 Special Finishes: \$49

PN1208

- 1/2" x 8" IPS Pipe Nipple

PC: \$66
 Special Finishes: \$85

PN1212

- 1/2" x 12" IPS Pipe Nipple

PC: \$82
 Special Finishes: \$98

PN1219

- 1/2" x 19" IPS Pipe Nipple

PC: \$142
 Special Finishes: \$210

PN1224

- 1/2" x 24" IPS Pipe Nipple

PC: \$208
 Special Finishes: \$241

PN1236

- 1/2" x 36" IPS Pipe Nipple

PC: \$255
 Special Finishes: \$290

PN1248

- 1/2" x 48" IPS Pipe Nipple

PC: \$375
 Special Finishes: \$508

Available Finishes:

Standard Finish
 ■ PC

Special Finishes

■ PBP
 ■ PB
 ■ PN
 ■ SN
 ■ ORB
 ■ PCW
 ■ MB



FLAT HEAD TOILET SUPPLY RISERS

TS3812

- 3/8" x 12" Supply Tube

PC: \$23
 Special Finishes: \$31

TS3820

- 3/8" x 20" Supply Tube

PC: \$26
 Special Finishes: \$34

TS1212

- 1/2" x 12" Supply Tube Limited Supply

PC: \$29
 Special Finishes: \$41

Available Finishes:

Standard Finish
 ■ PC

Special Finishes

■ PBP
 ■ PN
 ■ SN
 ■ AC
 ■ ORB
 ■ PCW
 ■ MB



BULLNOSE FAUCET SUPPLY RISERS

FS3812

- 3/8" x 12" Supply Tube

PC: \$20
Special Finishes: \$28

FS3820

- 3/8" x 20" Supply Tube

PC: \$21
Special Finishes: \$28

FS1212

- 1/2" x 12" Supply Tube Limited Supply

PC: \$26
Special Finishes: \$39

FS1220

- 1/2" x 20" Supply Tube Limited Supply

PC: \$29
Special Finishes: \$44

Available Finishes:

Standard Finish

■ PC

Special Finishes

■ PBP

■ PB

■ PN

■ SN

■ AC

■ ORB

■ PCW

■ MB



CORRUGATED FAUCET SUPPLY RISERS

CFS3812

- 3/8" x 12" Supply Pipe

PC: \$23
Special Finishes: \$31

CFS3815

- 3/8" x 15" Supply Pipe Limited Supply

PC: \$25
Special Finishes: \$33

CFS3820

- 3/8" x 20" Supply Pipe

PC: \$26
Special Finishes: \$34.39

CFS1212

- 1/2" x 12" Supply Pipe Limited Supply

PC: \$28
Special Finishes: \$39

CFS1215

- 1/2" x 15" Supply Pipe Limited Supply

PC: \$29
Special Finishes: \$45

Available Finishes:

Standard Finish

■ PC

Special Finishes

■ PBP

■ PB

■ PN

■ SN

■ AC

■ ORB

Includes 1/2" Faucet Cone,
1/2" Thread-on and 7/8" Toilet
Ballcock Washer



1/4-TURN ANGLE STOP, 1/2" IPS - LEVER HANDLE

AS400

- 1/4-turn ball valve angle stop
- 1/2" IPS inlet
- 3/8" OD compression outlet
- Lever handle
- Lead free brass construction

PC: \$72
Special Finishes: \$92

Available Finishes:

Standard Finish

■ PC

Special Finishes

■ PN

■ SN

■ ORB

■ MB



1/4-TURN ANGLE STOP, 5/8" OD - LEVER HANDLE

AS401

- 1/4-turn ball valve angle stop
- 1/2" copper pipe compression (5/8" OD) inlet
- 3/8" OD compression outlet
- Lever handle
- Lead free brass construction

PC: \$72
Special Finishes: \$92

Available Finishes:

Standard Finish

■ PC

Special Finishes

■ PN

■ SN

■ ORB

■ MB



STOPS & SUPPLIES

1/4-TURN ANGLE STOP, 1/2" IPS - CROSS HANDLE

AS402X

- 1/4-turn ball valve angle stop
- 1/2" IPS inlet
- 3/8" OD compression outlet
- Cross handle
- Lead free brass construction

PC: \$72
Special Finishes: \$92

Available Finishes:

Standard Finish
■ PC

Special Finishes

■ PN
■ SN
■ ORB
■ MB



1/4-TURN ANGLE STOP, 5/8" OD INLET - CROSS HANDLE

AS403X

- 1/4-turn ball valve angle stop
- 1/2" copper pipe compression (5/8" OD) inlet
- 3/8" OD compression outlet
- Cross handle
- Lead free brass construction

PC: \$72
Special Finishes: \$92

Available Finishes:

Standard Finish
■ PC

Special Finishes

■ PN
■ SN
■ ORB
■ MB



ANGLE STOP, 1/2" IPS - ROUND HANDLE

AS404

- Angle stop
- 1/2" IPS pipe inlet
- 3/8" OD compression outlet
- Round Handle

PC: \$57
Special Finishes: \$80

Available Finishes:

Standard Finish
■ PC

Special Finishes

■ PBP
■ PB
■ PN
■ SN
■ AC
■ PCW
■ ORB
■ MB



ANGLE STOP, 1/2" NOM. COPPER - ROUND HANDLE

AS405

- Angle stop
- 1/2" nominal compression inlet (5/8" OD)
- 3/8" OD compression outlet
- Round Handle

PC: \$57
Special Finishes: \$80

Available Finishes:

Standard Finish
■ PC

Special Finishes

■ PBP
■ PB
■ PN
■ SN
■ SS
■ AC
■ PCW
■ ORB
■ MB



COMP. ANGLE STOP, 1/2" IPS - CROSS HANDLE

AS406X

- Compression style angle stop
- 1/2" IPS inlet for iron pipe
- 3/8" OD compression outlet
- Forged cross handle
- Lead free brass construction

PC: \$110
Special Finishes: \$133

Available Finishes:

Standard Finish
■ PC

Special Finishes

■ PBP
■ PB
■ PN
■ SN
■ AC
■ SS
■ PCW
■ ORB
■ MB



COMP. ANGLE STOP, 5/8" OD - CROSS HANDLE

AS407X

- Compression style angle stop
- 1/2" copper pipe compression (5/8" OD) inlet
- 3/8" OD compression outlet
- Forged cross handle
- Lead free brass construction

PC: \$110

Special Finishes: \$133

Available Finishes:

Standard Finish
PC

Special Finishes

PBP
PB
PN
SN
AC
SS
PCW
ORB
MB



1/4-TURN ANGLE STOP, 5/8" OD INLET - ROUND HANDLE

AS408

- 1/4-turn ceramic valve angle stop
- 1/2" copper pipe compression (5/8" OD) inlet
- 3/8" OD compression outlet
- Round lever handle
- Lead free brass construction

PC: \$102

Special Finishes: \$128

Available Finishes:

Standard Finish
PC

Special Finishes

PBP
PB
PN
SN
ORB
MB



1/4-TURN ANGLE STOP, 5/8" OD INLET - SQUARE HANDLE

AS409

- 1/4-turn ceramic valve angle stop
- 1/2" copper pipe compression (5/8" OD) inlet
- 3/8" OD compression outlet
- Square stop and handle
- Lead free brass construction

PC: \$141

Special Finishes: \$175

Available Finishes:

Standard Finish
PC

Special Finishes

PBP
PB
PN
SN
ORB
MB



1/4-TURN ANGLE STOP, ROUND TOILET SUPPLY

ASTS410

- 1/4-turn ceramic valve angle stop
- 1/2" copper pipe compression (5/8" OD) inlet
- 3/8" OD compression outlet
- Round lever handle
- 3/8" x 20" flat end toilet supply

PC: \$128

Special Finishes: \$154

Available Finishes:

Standard Finish
PC

Special Finishes

PBP
PB
PN
SN
ORB
MB



1/4-TURN ANGLE STOP, SQUARE TOILET SUPPLY

ASTS411

- 1/4-turn ceramic valve angle stop
- 1/2" copper pipe compression (5/8" OD) inlet
- 3/8" OD compression outlet
- Square stop and handle
- 3/8" x 20" flat end toilet supply

PC: \$176

Special Finishes: \$206

Available Finishes:

Standard Finish
PC

Special Finishes

PBP
PB
PN
SN
ORB
MB



ROUND HANDLE IPS ANGLE STOP KITS

1/2" IPS X 3/8" FLAT HEAD RISER TOILET KIT - ROUND

AS412K

- 1/2" IPS inlet
- 3/8" OD compression outlet
- Round handle compression stop
- 3/8" x 20" flat head toilet riser
- 1/2" IPS x 4" nipple
- 1/2" IPS sure grip flange

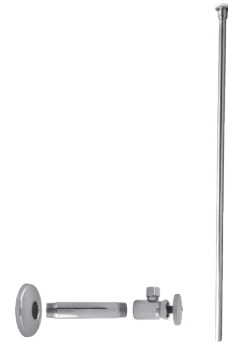
PC: \$111
Special Finishes: \$160

Available Finishes:

Standard Finish
■ PC

Special Finishes

■ PBP
■ PB
■ PN
■ SN
■ ORB
■ PCW
■ MB



1/2" IPS X 3/8" BULLNOSE RISER FAUCET KIT - ROUND

AS414K

- 1/2" IPS inlet
- 3/8" OD compression outlet
- 2 ea. round handle compression stops
- 2 ea. 3/8" x 20" bullnose faucet risers
- 2 ea. 1/2" IPS x 4" nipples
- 2 ea. 1/2" IPS sure grip flanges

PC: \$221
Special Finishes: \$318

Available Finishes:

Standard Finish
■ PC

Special Finishes

■ PBP
■ PN
■ SN
■ ORB
■ PCW
■ MB



1/2" IPS X 3/8" X 12" CORRUGATED RISER KIT - ROUND

AS415K

- 1/2" IPS inlet
- 3/8" OD compression outlet
- Round handle compression stop
- 3/8" x 12" corrugated riser
- 1/2" IPS x 4" nipple
- Includes 1/2" faucet and 7/8" toilet cone washers
- 1/2" IPS sure grip flange

PC: \$110
Special Finishes: \$154

Available Finishes:

Standard Finish
■ PC

Special Finishes

■ PBP
■ PB
■ PN
■ SN
■ ORB



1/2" IPS X 3/8" X 20" CORRUGATED RISER KIT - ROUND

AS416K

- 1/2" IPS inlet
- 3/8" OD compression outlet
- Round handle compression stop
- 3/8" x 20" corrugated riser
- 1/2" IPS x 4" nipple
- Includes 1/2" faucet and 7/8" toilet cone washers
- 1/2" IPS sure grip flange

PC: \$113
Special Finishes: \$157

Available Finishes:

Standard Finish
■ PC

Special Finishes

■ PBP
■ PB
■ PN
■ SN
■ ORB



CROSS HANDLE IPS ANGLE STOP KITS

1/2" IPS X 3/8" FLAT HEAD RISER TOILET KIT - CROSS

AS417KX

- 1/2" IPS inlet
- 3/8" OD compression outlet
- Cross handle compression stop
- 3/8" x 20" flat head toilet riser
- 1/2" IPS x 4" nipple
- 1/2" IPS sure grip flange

PC: \$162
Special Finishes: \$221

Available Finishes:

Standard Finish
■ PC

Special Finishes

■ PBP
■ PB
■ PN
■ SN
■ ORB
■ PCW
■ MB



1/2" IPS X 3/8" BULLNOSE RISER FAUCET KIT - CROSS

AS418KX

- 1/2" IPS inlet
- 3/8" OD compression outlet
- 2 ea. cross handle compression stops
- 2 ea. 3/8" x 20" bullnose faucet risers
- 2 ea. 1/2" IPS x 4" nipples
- 2 ea. 1/2" IPS sure grip flanges

PC: \$326
Special Finishes: \$445

Available Finishes:

Standard Finish
■ PC

Special Finishes

■ PBP
■ PB
■ PN
■ SN
■ ORB
■ PCW
■ MB



1/2" IPS X 3/8" X 12" CORRUGATED RISER KIT - CROSS

AS419KX

- 1/2" IPS inlet
- 3/8" OD compression outlet
- Cross handle compression stop
- 3/8" x 12" corrugated riser
- 1/2" IPS x 4" nipple
- Includes 1/2" faucet and 7/8" toilet cone washers
- 1/2" IPS sure grip flange

PC: \$156
Special Finishes: \$215

Available Finishes:

Standard Finish
■ PC

Special Finishes

■ PBP
■ PB
■ PN
■ SN
■ PCW
■ ORB
■ MB



1/2" IPS X 3/8" X 15" CORRUGATED RISER KIT - CROSS

AS420KX

- 1/2" IPS inlet
- 3/8" OD compression outlet
- Cross handle compression stop
- 3/8" x 15" corrugated riser
- 1/2" IPS x 4" nipple
- Includes 1/2" faucet and 7/8" toilet cone washers
- 1/2" sure grip IPS flange

PC: \$157
Special Finishes: \$216

Available Finishes:

Standard Finish
■ PC

Special Finishes

■ PBP
■ PB
■ PN
■ SN
■ PCW
■ ORB
■ MB



1/2" IPS X 3/8" X 20" CORRUGATED RISER KIT - CROSS

AS421KX

- 1/2" IPS inlet
- 3/8" OD compression outlet
- Cross handle compression stop
- 3/8" x 20" corrugated riser
- 1/2" IPS x 4" nipple
- Includes 1/2" faucet and 7/8" toilet cone washers
- 1/2" IPS sure grip flange

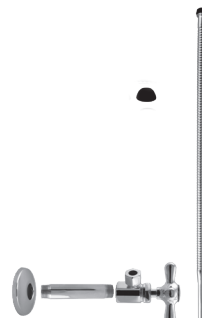
PC: \$159
Special Finishes: \$229

Available Finishes:

Standard Finish
■ PC

Special Finishes

■ PBP
■ PB
■ PN
■ SN
■ PCW
■ ORB
■ MB



ROUND HANDLE COMPRESSION INLET ANGLE STOP KITS

1/2" NOM. X 3/8" FLAT HEAD RISER TOILET KIT - ROUND

AS422K

- 1/2" nominal compression (5/8" OD) inlet
- 3/8" OD compression outlet
- Round handle compression stop
- 3/8" x 20" flat head toilet riser
- 1/2" nominal sure grip flange

PC: \$69
Special Finishes: \$95

Available Finishes:

Standard Finish
■ PC

Special Finishes

■ PBP
■ PB
■ PN
■ SN
■ ORB
■ PCW
■ MB



1/2" NOM. X 3/8" BULLNOSE RISER FAUCET KIT - ROUND

AS423K

- 1/2" nominal compression (5/8" OD) inlet
- 3/8" OD compression outlet
- 2 ea. round handle compression stops
- 2 ea. 3/8" x 20" bullnose faucet risers
- 2 ea. 1/2" nominal sure grip flanges

PC: \$138
Special Finishes: \$156

Available Finishes:

Standard Finish
■ PC

Special Finishes

■ PBP
■ PB
■ PN
■ SN
■ ORB
■ PCW
■ MB



1/2" NOM. X 3/8" X 12" CORRUGATED RISER KIT - ROUND

AS424K

- 1/2" nominal compression (5/8" OD) inlet
- 3/8" OD compression outlet
- Round handle compression stop
- 3/8" x 12" corrugated riser
- Includes 1/2" and 7/8" cone washers
- Use for faucet or toilet
- 1/2" nominal sure grip flange

PC: \$69
Special Finishes: \$95

Available Finishes:

Standard Finish
■ PC

Special Finishes

■ PBP
■ PB
■ PN
■ SN
■ PCW
■ ORB
■ MB



1/2" NOM. X 3/8" X 15" CORRUGATED RISER KIT - ROUND

AS425K

- 1/2" nominal compression (5/8" OD) inlet
- 3/8" OD compression outlet
- Round handle compression stop
- 3/8" x 15" corrugated riser
- Includes 1/2" and 7/8" cone washers
- Use for faucet or toilet
- 1/2" nominal sure grip flange

PC: \$70
Special Finishes: \$97

Available Finishes:

Standard Finish
■ PC

Special Finishes

■ PBP
■ PB
■ PN
■ SN
■ PCW
■ ORB
■ MB



1/2" NOM. X 3/8" X 20" CORRUGATED RISER KIT - ROUND

AS426K

- 1/2" nominal compression (5/8" OD) inlet
- 3/8" OD compression outlet
- Round handle compression stop
- 3/8" x 20" corrugated riser
- Includes 1/2" and 7/8" cone washers
- Use for faucet or toilet
- 1/2" nominal sure grip flange

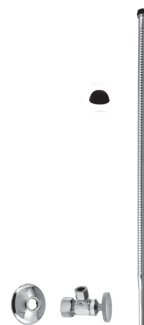
PC: \$72
Special Finishes: \$98

Available Finishes:

Standard Finish
■ PC

Special Finishes

■ PBP
■ PB
■ PN
■ SN
■ PCW
■ ORB
■ MB



CROSS HANDLE COMPRESSION INLET ANGLE STOP KITS

1/2" NOM. X 3/8" FLAT HEAD RISER TOILET KIT - CROSS

AS427KX

- 1/2" nominal compression (5/8" OD) inlet
- 3/8" OD compression outlet
- Cross handle compression stop
- 3/8" x 20" flat head toilet riser
- 1/2" nominal sure grip flange

PC: \$136
Special Finishes: \$170

Available Finishes:

Standard Finish
■ PC

Special Finishes

■ PBP
■ PB
■ PN
■ SN
■ ORB
■ PCW
■ MB



1/2" NOM. X 3/8" BULLNOSE RISER FAUCET KIT - CROSS

AS428KX

- 1/2" nominal compression (5/8" OD) inlet
- 3/8" OD compression outlet
- 2 ea. cross handle compression stops
- 2 ea. 3/8" x 20" bullnose faucet risers
- 2 ea. 1/2" nominal sure grip flanges

PC: \$267
Special Finishes: \$342

Available Finishes:

Standard Finish
■ PC

Special Finishes

■ PBP
■ PB
■ PN
■ SN
■ ORB
■ PCW
■ MB



1/2" NOM. X 3/8" X 12" CORRUGATED RISER KIT - CROSS

AS429KX

- 1/2" nominal compression (5/8" OD) inlet
- 3/8" OD compression outlet
- Cross handle compression stop
- 3/8" x 12" corrugated riser
- Includes 1/2" and 7/8" cone washers
- Use for faucet or toilet
- 1/2" nominal sure grip flange

PC: \$128
Special Finishes: \$180

Available Finishes:

Standard Finish
■ PC

Special Finishes

■ PBP
■ PB
■ PN
■ SN
■ PCW
■ ORB
■ MB



1/2" NOM. X 3/8" X 15" CORRUGATED RISER KIT - CROSS

AS430KX

- 1/2" nominal compression (5/8" OD) inlet
- 3/8" OD compression outlet
- Cross handle compression stop
- 3/8" x 15" corrugated riser
- Includes 1/2" and 7/8" cone washers
- Use for faucet or toilet
- 1/2" nominal sure grip flange

PC: \$129
Special Finishes: \$182

Available Finishes:

Standard Finish
■ PC

Special Finishes

■ PBP
■ PB
■ PN
■ SN
■ PCW
■ ORB
■ MB



1/2" NOM. X 3/8" X 20" CORRUGATED RISER KIT - CROSS

AS432KX

- 1/2" nominal compression (5/8" OD) inlet
- 3/8" OD compression outlet
- Cross handle compression stop
- 3/8" x 20" corrugated riser
- Includes 1/2" and 7/8" cone washers
- Use for faucet or toilet
- 1/2" nominal sure grip flange

PC: \$131
Special Finishes: \$183

Available Finishes:

Standard Finish
■ PC

Special Finishes

■ PBP
■ PB
■ PN
■ SN
■ PCW
■ ORB
■ MB



PEDESTAL LAVATORY KITS

1-1/4" X 1-1/4" FLAT TRAP

BT500

- European low profile flat trap
- 1-1/4 in. x 1-1/4 in. OD cast brass trap
- High box flange included

PC: \$195
Special Finishes: \$244

Available Finishes:

Standard Finish

■ PC

Special Finishes

■ PBP

■ PB

■ PN

■ PCW

■ SN

■ ORB

■ MB



1-1/4" X 1-1/4" ROUND TRAP WITH CLEANOUT

BT501

- Cylindrical trap
- 1-1/4 in. x 1-1/4 in. OD tubular
- Low flange included
- Cast brass trap
- 17 ga. brass tube
- Cleanout port in trap bottom

PC: \$309
Special Finishes: \$348

Available Finishes:

Standard Finish

■ PC

Special Finishes

■ PBP

■ PB

■ PN

■ PCW

■ SN

■ ORB

■ MB



1-1/4" X 1-1/4" SQUARE TRAP

BT502

- Square trap
- 1-1/4 in. x 1-1/4 in. OD tubular
- Low flange included
- Cast brass trap
- 17 ga. brass tube
- Elegant trap design with UPC barriers

PC: \$361
Special Finishes: \$387

Available Finishes:

Standard Finish

■ PC

Special Finishes

■ PBP

■ PB

■ PN

■ SN

■ ORB

■ MB



P-TRAPS WITH BOX FLANGES

1-1/2" X 1-1/2" P-TRAP WITH BOX FLANGE

PT505

- Standard P-Trap with flange
- 1-1/2" x 1-1/2"
- D409 high box flange included
- 17 gauge brass
- Slip joint nuts included

PC: \$136

Special Finishes: \$170

Available Finishes:

Standard Finish
■ PC

Special Finishes

■ PBP
■ PB
■ PN
■ PCW
■ SN
■ ORB
■ MB



1-1/2" X 1-1/2" P-TRAP WITH BOX FLANGE

PT511

- 1-1/2" X 1-1/2" Milwaukee
- Cleanout threaded P-Trap
- Box Flange in 17 ga.

PC: \$163

Special Finishes: \$205

Available Finishes:

Standard Finish
■ PC

Special Finishes

■ SN
■ MB



PT512

- 1-1/2" X 1-1/2" Milwaukee
- Cleanout threaded P-Trap
- Box Flange in 20 ga.

PC: \$155

Special Finishes: \$195

1-1/4" X 1-1/4" P-TRAP WITH BOX FLANGE

PT506

- Standard P-trap with flange
- 1-1/4" x 1-1/4"
- D4091 high box flange included
- 17 gauge brass
- Slip joint nuts included

PC: \$136

Special Finishes: \$170

Available Finishes:

Standard Finish
■ PC

Special Finishes

■ PBP
■ PB
■ PN
■ PCW
■ SN
■ ORB
■ MB



LA CODE 1-1/2" TRAP & WASTE ELL

PT507B

- New England style P-trap
- Ground joint trap adapter
- 1-1/2" x 1-1/2" J-bend
- 1-1/2" FIP inlet
- Cast brass with brass slip joint nuts

RAW: \$52

PC: \$69

Available Finishes:

Standard Finish
RAW
■ PC



1-1/2" X 1-1/2" GROUND JOINT P-TRAP & FLANGE

PT508B

- Ground joint P-trap with bell flange
- 1-1/2" x 1-1/2" 17 gauge brass
- Brass slip joint nuts included

RAW: \$47

PC: \$61

Available Finishes:

Standard Finish
■ RAW



CONSTRUCTION ACCESSORIES

1-1/2 X 1-1/2 OR 1-1/4 P-TRAP CORROSION PROOF

PT509

- Corrosion resistant ABS construction
- 1-1/2" x 1-1/2" or 1-1/4 with poly washer
- Lustrous exterior finish
- Color matched slip joint nuts & escutcheon
- Great for decorative sinks at a bargain price

PC: \$35
Special Finishes: \$47

Available Finishes:

- Standard Finish
■ PC
- Special Finishes
■ PB
■ SN
■ ORB



1-1/2" FEMALE DESANKO FITTING

PTFA Female End

PTMA Male End

- 1-1/2 Cast brass trap adapter fitting
- Brass ferrule and nut included

RAW: \$23

Available Finishes:

- Rough
Brass



1-1/2" 2-PART CONTINUOUS WASTE LA CODE

DP510

- Side outlet waste fitting
- 1-1/2" x 1-1/2"
- 17 gauge brass
- Brass slip joint nuts & poly washers included

RAW: \$66
PC: \$75

Available Finishes:

- Standard Finish
RAW
■ PC



1-1/2" SLIP JOINT WYE WITH 7/8" BRANCH

DY512 1-1/2" Slip Joint

DY514 1-1/4" Thread One End (Chrome Only)

- 7/8" brass branch, 20 gauge brass tube

RAW: \$29
PC: \$34

Available Finishes:

- Standard Finish
RAW
■ PC



1-1/2" X 16" DOUBLE END SLIP JOINT EXTENSION

DP515 1-1/4"

DP516 1-1/2"

- Cut length to fit
- 17 gauge brass tube
- Brass slip joint nuts & poly washers included

RAW: \$46
PC: \$56

Available Finishes:

- Standard Finish
RAW
■ PC



1-1/2" X 16" FLANGED TAILPIECE EXTENSIONS

DP517 1-1/2" x 8"

RAW: \$28 PC: \$39

DP518 1-1/2" x 12"

RAW: \$29 PC: \$46

DP519 1-1/2" x 16" Double End

RAW: \$47 PC: \$52

- Cut length to fit
- 17 gauge brass tube

Available Finishes:

- Standard Finish
RAW
■ PC



TUBULAR DRAIN PRODUCTS

1-1/4" X 8" OD SLIP JOINT EXTENSION TUBE

DP520

- 1-1/4" OD Tubular
- 8" Long
- Slip Joint Nut and Washer
- Solid Brass
- All exposed style
- 17 gauge tube

PC: \$64

Special Finishes: \$97

Available Finishes:

Standard Finish

■ PC

Special Finishes

■ PBP

■ PN

■ SN

■ ORB

■ SS

■ PCW

■ MB



1-1/4" X 12" OD SLIP JOINT EXTENSION TUBE

DP521

- 1-1/4" OD Tubular
- 12" Long
- Slip Joint Nut and Washer
- Solid Brass
- All exposed style
- 17 gauge tube

PC: \$67

Special Finishes: \$102

Available Finishes:

Standard Finish

■ PC

Special Finishes

■ PBP

■ PN

■ SN

■ ORB

■ SS

■ PCW

■ MB



1-1/2" X 8" FINISHED EXTENSION

DP522

- 1-1/2" OD Tubular
- 8" Long
- Slip Joint Nut and Washer
- Solid Brass
- All exposed style
- 17 gauge tube

PC: \$64

Special Finishes: \$97

Available Finishes:

Standard Finish

■ PC

Special Finishes

■ PBP

■ PN

■ SN

■ ORB

■ SS

■ PCW

■ MB



1-1/2" X 12" FINISHED EXTENSION

DP523

- 1-1/2" OD Tubular
- 12" Long
- Slip Joint Nut and Washer
- Solid Brass
- All exposed style
- 17 gauge tube

PC: \$67

Special Finishes: \$102

Available Finishes:

Standard Finish

■ PC

Special Finishes

■ PBP

■ PN

■ SN

■ ORB

■ SS

■ PCW

■ MB



1-1/4" OD X 12" TAILPIECE

DP524

- Tailpiece with both ends threaded
- 1-1/4" OD tubing
- 12" length
- Brass

Polished Chrome: \$61

Special Finishes: \$92

Available Finishes:

Standard Finish

■ PC

Special Finishes

■ PBP

■ PN

■ SN

■ ORB

■ PCW

■ MB



1-1/2" OD X 12" TAILPIECE

DP525

- Tailpiece with threaded end
- 1-1/2" OD tubing
- 12" length
- Brass

PC: \$61

Special Finishes: \$92

Available Finishes:

Standard Finish

■ PC

Special Finishes

■ PBP

■ PN

■ SN

■ ORB

■ PCW

■ MB



LAVATORY SINK DRAINS

HIGH-FLOW GRID DRAIN WITH OVERFLOW HOLES

LD600

- Rapid draining raised grid design
- Fully finished for exposed installation
- With overflow holes
- Fits 1-1/2" opening with 1-1/4" tailpiece
- 3-1/2" threading for thick sinks
- Brass construction

PC: \$134

Special Finishes: \$198

Available Finishes:

Standard Finish

■ PC

Special Finishes

■ PBP

■ PB

■ PN

■ SN

■ ORB

■ PCW

■ MB



HIGH-FLOW GRID DRAIN, NO OVERFLOW HOLES

LD601

- Rapid draining raised grid design
- Fully finished for exposed installation
- Without overflow holes
- Fits 1-1/2" opening with 1-1/4" tailpiece
- 3-1/2" threading for thick sinks
- Brass construction

PC: \$134

Special Finishes: \$198

Available Finishes:

Standard Finish

■ PC

Special Finishes

■ PBP

■ PB

■ PN

■ SN

■ ORB

■ PCW

■ MB



LIFT & TURN LAV DRAIN WITH OVERFLOW HOLES

LD602

- Lift & turn lavatory drain
- Fully finished for exposed installation
- With overflow holes
- Fits 1-1/2" opening with 1-1/4" tailpiece
- Use D410SP for thin sink applications
- Brass construction

PC: \$152

Special Finishes: \$187

Available Finishes:

Standard Finish

■ PC

Special Finishes

■ PBP

■ PB

■ PN

■ SN

■ SS

■ PCW

■ ORB

■ MB



LIFT & TURN LAV DRAIN, NO OVERFLOW HOLES

LD603

- Lift & turn lavatory drain
- Fully finished for exposed installation
- Without overflow holes
- Fits 1-1/2" opening with 1-1/4" tailpiece
- Use D410SP for thin sink applications
- Brass construction

PC: \$152

Special Finishes: \$187

Available Finishes:

Standard Finish

■ PC

Special Finishes

■ PBP

■ PB

■ PN

■ SN

■ SS

■ PCW

■ ORB

■ MB



1-1/4 INCH OFFSET CONNECT MUSHROOM DRAIN WITH OVERFLOW HOLES

LD611

- 1-1/4" Offset Connect
- Mushroom Drain
- Large overflow holes
- Fully finished for exposed installation
- Fits 1-1/2" opening with 1-1/4" tailpiece
- Brass construction 17 Ga.

PC: \$183

Special Finishes: \$224

Available Finishes:

Standard Finish

■ PC

Special Finishes

■ SN

■ MB

■ BB

■ CG



LAVATORY SINK DRAINS

POP-UP LAV DRAIN, NO OVERFLOW HOLES

LD604

- Pop-up style lavatory drain
- Fully finished for exposed installation
- Strap, horizontal rod, and lift rod included
- Without overflow holes
- Fits 1-1/2" opening with 1-1/4" tailpiece
- Brass construction

PC: \$198
Special Finishes: \$215

Available Finishes:

Standard Finish
■ PC

Special Finishes

■ PBP
■ PB
■ PN
■ SN
■ ORB
■ PCW
■ MB



POP-UP LAV DRAIN WITH OVERFLOW HOLES

LD605

- Pop-up style lavatory drain
- Fully finished for exposed installation
- Strap, horizontal rod, and lift rod included
- With overflow holes
- Fits 1-1/2" opening with 1-1/4" tailpiece
- Brass construction

PC: \$198
Special Finishes: \$215

Available Finishes:

Standard Finish
■ PC

Special Finishes

■ PBP
■ PB
■ PN
■ SN
■ ORB
■ PCW
■ MB



GRID STRAINER LAV DRAIN, NO OVERFLOW HOLES

LD606

- Grid style lavatory drain
- 19 hole grid
- Fully finished for exposed installation
- Without overflow holes
- Fits 1-1/2" opening with 1-1/4" tailpiece
- Brass construction

PC: \$198
Special Finishes: \$215

Available Finishes:

Standard Finish
■ PC

Special Finishes

■ PBP
■ PB
■ PN
■ SN
■ ORB
■ PCW
■ MB



GRID STRAINER LAV DRAIN WITH OVERFLOW HOLES

LD607

- Grid style lavatory drain
- 19 hole grid
- Fully finished for exposed installation
- With overflow holes
- Fits 1-1/2" opening with 1-1/4" tailpiece
- Brass construction

PC: \$120
Special Finishes: \$170

Available Finishes:

Standard Finish
■ PC

Special Finishes

■ PBP
■ PB
■ PN
■ SN
■ ORB
■ PCW
■ MB



OFFSET CONNECT STRAINER LAV DRAIN WITH OVERFLOW HOLES

LD612

- Grid style lavatory drain
- 19 hole grid
- Fully finished for exposed installation
- With overflow holes
- Fits 1-1/2" opening with 1-1/4" tailpiece
- Brass construction 17 Ga.

PC: \$183
Special Finishes: \$224

Available Finishes:

Standard Finish
■ PC

Special Finishes

■ SN
■ MB
■ BB
■ CG



LAVATORY SINK DRAINS

EURO MUSHROOM LAV DRAIN WITH OVERFLOW

LD608

- European mushroom push-down lavatory drain
- Push in stopper to seal water
- Fully finished for exposed installation
- With overflow holes
- Fits 1-1/2" opening with 1-1/4" tailpiece
- Brass construction

PC: \$156
Special Finishes: \$162

Available Finishes:

Standard Finish
■ PC

Special Finishes

■ PBP
■ PB
■ PN
■ SN
■ ORB
■ PCW
■ MB



EURO MUSHROOM LAV DRAIN, NO OVERFLOW

LD609

- European mushroom push-down lavatory drain
- Push in stopper to seal water
- Fully finished for exposed installation
- Without overflow holes
- Fits 1-1/2" opening with 1-1/4" tailpiece
- Brass construction

PC: \$156
Special Finishes: \$162

Available Finishes:

Standard Finish
■ PC

Special Finishes

■ PBP
■ PB
■ PN
■ SN
■ ORB
■ PCW
■ MB



UNIVERSAL UMBRELLA LAV DRAIN

LD610

- European umbrella push-down stopper
- Fully finished for exposed installation
- Fits extra-thin sheet metal sinks
- Fits sinks up to 2-3/4" thick
- Fits 1-1/2" to 1-5/8" opening
- Uses 1-1/4" tailpiece
- Heavy brass construction

PC: \$190
Special Finishes: \$283

Available Finishes:

Standard Finish
■ PC

Special Finishes

■ PBP
■ PB
■ PN
■ SN
■ ORB
■ PCW
■ MB



TOILET INDEX TRIP LEVERS

FRONT MOUNT INDEX TRIP LEVER

TL620

- Heavy brass Index rod
- Zinc lever housing with metal nut

PC: \$15
Special Finishes: \$34

Available Finishes:

Standard Finish
■ PC

Special Finishes

■ PBP
■ PB
■ SN
■ ORB
■ PCW
■ MB



ECONOMY FRONT MOUNT INDEX TRIP LEVER

TL621

- Metal housing with metal nut
- 100 pieces per case

PC: \$1,146

TL622

- Plastic housing and nut
- 100 pieces per case

PC: \$1,056

Available Finishes:

Standard Finish
■ PC





SHOWERS

TUB & SHOWER WALL COVER TRIMS

1-HOLE REMODEL PLATE FOR MOEN & DELTA

CP640

- 1-hole remodel plate
- Fits Moen and Delta single handle valves
- Includes two screws and mounting bars
- 13" overall width
- 7-1/2" at tallest point
- 9-1/2" screw-to-screw
- 5-1/2" diameter hole

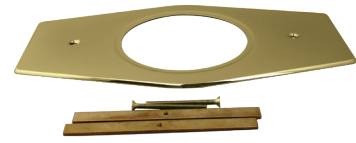
PC: \$80
Special Finishes: \$162

Available Finishes:

Standard Finish
■ PC

Special Finishes

■ PBP
■ PB
■ PN
■ SN
■ SS
■ PCW
■ ORB
■ MB



1-HOLE REMODEL PLATE FOR MIXET

CP641

- 1-hole remodel plate
- Fits Mixet only
- Includes two screws and mounting bars
- 13" overall width
- 7-1/2" at tallest point
- 9-1/2" screw-to-screw
- 3-3/4" diameter hole

PC: \$80
Special Finishes: \$162

Available Finishes:

Standard Finish
■ PC

Special Finishes

■ PBP
■ PB
■ PN
■ SN
■ SS
■ PCW
■ ORB
■ MB



2-HOLE REMODEL PLATE

CP642

- 2-hole remodel plate
- Fits two valve unit
- 13" overall width
- 7-1/2" at tallest point
- 1-1/2" diameter holes
- 8" center to center of holes

PC: \$80
Special Finishes: \$162

Available Finishes:

Standard Finish
■ PC

Special Finishes

■ PBP
■ PB
■ PN
■ SN
■ SS
■ PCW
■ ORB
■ MB



3-HOLE REMODEL PLATE

CP643

- 3-hole remodel plate
- Fits three valve unit with diverter
- 13" overall width
- 7-1/2" at tallest point
- 1-1/2" diameter holes
- 8" center to center of outside holes

PC: \$80
Special Finishes: \$162

Available Finishes:

Standard Finish
■ PC

Special Finishes

■ PBP
■ PB
■ PN
■ SN
■ SS
■ PCW
■ ORB
■ MB



SHOWER ARMS WITH FLANGES

1/2" X 6" SHOWER ARM WITH SURE GRIP FLANGE

SA650

- Wall mounted 6" shower arm with flange
- 2-1/2" diameter sure grip flange
- 1/2" IPS inlet and outlet
- 6" length arm
- Lead-free brass

PC: \$33
Special Finishes: \$46

Available Finishes:

Standard Finish
■ PC

Special Finishes

■ PBP
■ PB
■ PN
■ SN
■ SS
■ PCW
■ ORB
■ MB



1/2" X 8" SHOWER ARM WITH SURE GRIP FLANGE

SA652

- Wall mounted 8" shower arm with flange
- 2-1/2" diameter sure grip flange
- 1/2" IPS inlet and outlet
- 8" length arm
- Lead-free brass

PC: \$39
Special Finishes: \$52

Available Finishes:

Standard Finish
■ PC

Special Finishes

■ PBP
■ PB
■ PN
■ SN
■ SS
■ PCW
■ ORB
■ MB



1/2" X 10" SHOWER ARM WITH SURE GRIP FLANGE

SA654

- Wall mounted 10" shower arm with flange
- 2-1/2" diameter sure grip flange
- 1/2" IPS inlet and outlet
- 10" length arm
- Lead-free brass

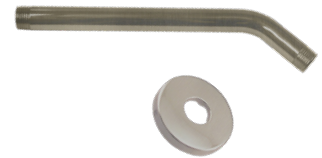
PC: \$46
Special Finishes: \$61

Available Finishes:

Standard Finish
■ PC

Special Finishes

■ PBP
■ PB
■ PN
■ SN
■ SS
■ PCW
■ ORB
■ MB



1/2" X 8" S-SHOWER ARM WITH SURE GRIP FLANGE

SA655

- Wall mounted "S" shaped shower arm with flange
- 2-1/2" diameter sure grip flange
- 1/2" IPS inlet and outlet
- Arm raises shower head 8"
- Lead-free brass

PC: \$110
Special Finishes: \$139

Available Finishes:

Standard Finish
■ PC

Special Finishes

■ PBP
■ PB
■ PN
■ SN
■ SS
■ PCW
■ ORB
■ MB



1/2" X 10" S-SHOWER ARM WITH SURE GRIP FLANGE

SA657

- Wall mounted "S" shaped shower arm with flange
- 2-1/2" diameter sure grip flange
- 1/2" IPS inlet and outlet
- Arm raises shower head 10"
- Lead-free brass

PC: \$110
Special Finishes: \$139

Available Finishes:

Standard Finish
■ PC

Special Finishes

■ PBP
■ PB
■ PN
■ SN
■ SS
■ PCW
■ ORB
■ MB



90° RAIN SHOWER ARMS

1/2" X 10" 90° RAIN SHOWER ARM & FLANGE

SA658

- Wall mounted 90-degree rain shower arm with decorative flange
- 1/2" male IPS inlet and outlet
- 10" length arm
- Heavy duty decorative flange included
- Lead-free brass

PC: \$102
Special Finishes: \$134

Available Finishes:

Standard Finish
■ PC

Special Finishes

■ PBP
■ PB
■ PN
■ SN
■ SS
■ PCW
■ ORB
■ MB



1/2" X 19" 90° RAIN SHOWER ARM & FLANGE

SA659

- Wall mounted 90-degree rain shower arm with decorative flange
- 1/2" male IPS inlet and outlet
- 19" length arm
- Heavy duty decorative flange included
- Lead-free brass

PC: \$154
Special Finishes: \$223

Available Finishes:

Standard Finish
■ PC

Special Finishes

■ PBP
■ PB
■ PN
■ SN
■ SS
■ PCW
■ ORB
■ MB



SQUARE CEILING SHOWER ARM & FLANGE

SA660

- 9 in. long square ceiling shower arm
- 1/2" male IPS inlet and outlet
- 1" square tube
- Matching square shower flange
- Lead-free brass shower arm

PC: \$121
Special Finishes: \$156

Available Finishes:

Standard Finish
■ PC

Special Finishes

■ PB
■ PN
■ SN
■ ORB
■ MB



1/2" CEILING ARMS WITH HEAVY DUTY FLANGES

SN1204

- 1/2" x 4" ceiling arm & flange

PC: \$56
Special Finishes: \$74

SN1206

- 1/2" x 6" ceiling arm & flange

PC: \$66
Special Finishes: \$90

SN1208

- 1/2" x 8" ceiling arm & flange

PC: \$82
Special Finishes: \$113

SN1212

- 1/2" x 12" ceiling arm & flange

PC: \$98
Special Finishes: \$134

SN1219

- 1/2" x 19" ceiling arm & flange

PC: \$162
Special Finishes: \$241

SN1224

- 1/2" x 24" ceiling arm & flange

PC: \$237
Special Finishes: \$257

SN1236

- 1/2" x 36" ceiling arm & flange

PC: \$274
Special Finishes: \$303

SN1248

- 1/2" x 48" ceiling arm & flange

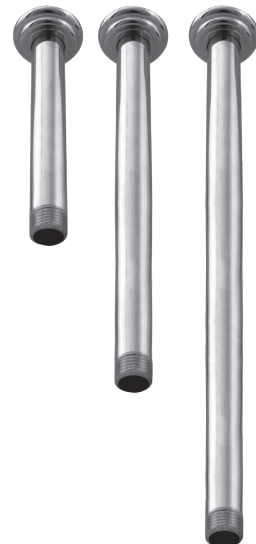
PC: \$387
Special Finishes: \$500

Available Finishes:

Standard Finish
■ PC

Special Finishes

■ PBP
■ PB
■ PN
■ SN
■ ORB
■ PCW
■ MB



CHATHAM STYLE 2-1/4" DIAMETER SHOWER HEAD

SH700

- Chatham style small spray diverter shower head
- 2-1/4" diameter
- 1/2" IPS inlet with pivot
- 6 spray holes and 1-1/2" spray ring
- 2.5 gallons per minute restrictor

PC: \$74
Special Finishes: \$97

Available Finishes:

Standard Finish
■ PC

Special Finishes

■ PBP
■ PB
■ PN
■ SN
■ ORB
■ PCW
■ MB



ADJUSTABLE STYLE 6-JET SHOWER HEAD

SH702

- Medium spray diverter shower head
- 2-1/4" diameter
- 1/2" IPS inlet with pivot
- 6 spray jets
- 2.5 gallons per minute with restrictor
- Adjusts from full spray to narrow stream
- Replaceable nozzles

PC: \$172
Special Finishes: \$319

Available Finishes:

Standard Finish
■ PC

Special Finishes

■ PBP
■ PB
■ PN
■ SN
■ PCW
■ ORB
■ MB



SQUARE THIN RAIN SHOWER HEAD 8"

SH708

- Polished welded stainless steel construction
- 1/2" Female IPS brass swivel ball for shower head positioning
- 2 mm thick 304 stainless steel for superior durability
- 1.8 gpm restrictor disk to meet EPA WaterSense compliance
- AntiCalc silicone nozzles allow shower head to maintain a clean and efficient stream
- Sleek flat finish edge to maintain the clean bathroom appearance
- Square corners and edges provide superior style and function

PC: \$192
Special Finishes: \$217

Available Finishes:

Standard Finish
■ PC

Special Finishes

■ SN
■ ORB
■ MB



SQUARE THIN RAIN SHOWER HEAD 12"

SH712

- Polished welded stainless steel construction
- 1/2" Female IPS brass swivel ball for shower head positioning
- 2 mm thick 304 stainless steel for superior durability
- 1.8 gpm restrictor disk to meet EPA WaterSense compliance
- AntiCalc silicone nozzles allow shower head to maintain a clean and efficient stream
- Sleek flat finish edge to maintain the clean bathroom appearance
- Square corners and edges provide superior style and function

PC: \$241
Special Finishes: \$301

Available Finishes:

Standard Finish
■ PC

Special Finishes

■ SN
■ ORB
■ MB



SHOWER HEADS

SQUARE THIN RAIN SHOWER HEAD 16"

SH716

- Polished welded stainless steel construction
- 1/2" Female IPS brass swivel ball for shower head positioning
- 2 mm thick 304 stainless steel for superior durability
- 1.8 gpm restrictor disk to meet EPA WaterSense compliance
- AntiCalc silicone nozzles allow shower head to maintain a clean and efficient stream
- Sleek flat finish edge to maintain the clean bathroom appearance
- Square corners and edges provide superior style and function

PC: \$543
Special Finishes: \$604

Available Finishes:

Standard Finish

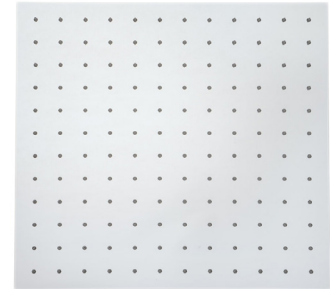
■ PC

Special Finishes

■ SN

■ ORB

■ MB



ROUND THIN RAIN SHOWER HEAD 8" DIAMETER

SH718

- Polished welded stainless steel construction
- 1/2" Female IPS brass swivel ball for shower head positioning
- 2 mm thick 304 stainless steel for superior durability
- 1.8 gpm restrictor disk to meet EPA WaterSense compliance
- AntiCalc silicone nozzles allow shower head to maintain a clean and efficient stream
- Sleek flat finish edge to maintain the clean bathroom appearance
- Sharp edges provide superior appearance
- 91 Individual nozzles

PC: \$217
Special Finishes: \$241

Available Finishes:

Standard Finish

■ PC

Special Finishes

■ SN

■ ORB

■ MB



ROUND THIN RAIN SHOWER HEAD 12" DIAMETER

SH720

- Polished welded stainless steel construction
- 1/2" Female IPS brass swivel ball for shower head positioning
- 2 mm thick 304 stainless steel for superior durability
- 1.8 gpm restrictor disk to meet EPA WaterSense compliance
- AntiCalc silicone nozzles allow shower head to maintain a clean and efficient stream
- Sleek flat finish edge to maintain the clean bathroom appearance
- Sharp edges provide superior appearance
- 91 Individual nozzles

PC: \$301
Special Finishes: \$362

Available Finishes:

Standard Finish

■ PC

Special Finishes

■ SN

■ ORB

■ MB



SHOWER HEADS

ROUND THIN RAIN SHOWER HEAD 16" DIAMETER

SH726

- Polished welded stainless steel construction
- 1/2" Female IPS brass swivel ball for shower head positioning
- 2 mm thick 304 stainless steel for superior durability
- 1.8 gpm restrictor disk to meet EPA WaterSense compliance
- AntiCalc silicone nozzles allow shower head to maintain a clean and efficient stream
- Sleek flat finish edge to maintain the clean bathroom appearance
- Sharp edges provide superior appearance
- 127 Individual nozzles

PC: \$580
Special Finishes: \$664

Available Finishes:

- Standard Finish
- PC
- Special Finishes
- SN
 - ORB
 - MB



5 FUNCTION SHOWER KIT WITH

SB730K

- Drill free adjustable shower bar for fixed and hand shower installation for increased height adjustment
- Diverts water between shower head and hand shower using a rotating valve
- Adjustable height hand shower bar mounts to shower arm outlet, no plumbing required
- Generous fixed shower head easily adjusts vertically using a cam assembly and ball socket
- 1/2" Shower hose outlet and tapered holder for 5-function adjustable hand shower

PC: \$329
Special Finishes: \$362

Available Finishes:

- Standard Finish
- PC
- Special Finishes
- SN
 - MB



6 FUNCTION SHOWER KIT WITH

SB735K

- Drill free adjustable shower bar for fixed and hand shower installation for increased height adjustment
- Diverts water between shower head and hand shower using a rotating valve
- Adjustable height hand shower bar mounts to shower arm outlet, no plumbing required
- Generous fixed shower head easily adjusts vertically using a cam assembly and ball socket
- 1/2" Shower hose outlet and tapered holder for 5-function adjustable hand shower

PC: \$329
Special Finishes: \$362

Available Finishes:

- Standard Finish
- PC
- Special Finishes
- SN
 - MB



SHOWER HEADS

NO-DRILL CONVERSION SLIDE BAR WITH DIVERTER

SB740

- Drill free adjustable shower bar for fixed and hand shower installation
- Diverts water between shower head and hand shower using a rotating valve
- Adjustable height hand shower bar mounts to shower arm outlet
- Fixed shower head easily adjusts vertically using a cam assembly and ball socket
- 1/2" Shower hose outlet and tapered holder on slide bar

PC: \$219
Special Finishes: \$258

Available Finishes:

Standard Finish
■ PC

Special Finishes

■ SN
■ MB



5-FUNCTION ADJUSTABLE SPRAY HAND SHOWER

HH745

- 5-function adjustable hand shower only
- 5" diameter spray face
- Adjustable spray face controls regulation
- Optimum angle for comfort and usability

Polished Chrome: \$54
Special Finishes: \$65

Available Finishes:

Standard Finish
■ PC

Special Finishes

■ SN
■ MB



5-FUNCTION ADJUSTABLE SPRAY HAND SHOWER

SH750

- 5-function adjustable shower head
- 5" diameter spray face
- Adjustable spray face controls regulation
- ABS ball joint for usability

PC: \$54
Special Finishes: \$65

Available Finishes:

Standard Finish
■ PC

Special Finishes

■ SN
■ MB



6-FUNCTION ADJUSTABLE SPRAY HAND SHOWER

SH752

- 6-function adjustable spray hand shower
- 5" diameter spray face
- Adjustable spray face controls regulation
- Longer hand shower handle for added usability

PC: \$54
Special Finishes: \$65

Available Finishes:

Standard Finish
■ PC

Special Finishes

■ SN
■ MB



6-FUNCTION ADJUSTABLE SPRAY HAND SHOWER

SH754

- 5-Function adjustable spray shower head
- 6" diameter spray face
- Adjustable spray face controls regulation
- Brass ball joint for durability

PC: \$65
Special Finishes: \$76

Available Finishes:

Standard Finish
■ PC

Special Finishes

■ SN
■ MB



HAND SHOWER ACCESSORIES & HOSES

SHOWER ARM VOLUME CONTROL

VC760

- 1/2" IPS female x 1/2" IPS male
- Adjusts flow from drizzle to full on
- Drizzle protects from scalding - will not shut off
- Cannot be used as a positive shut off valve by law
- Excellent water saving device

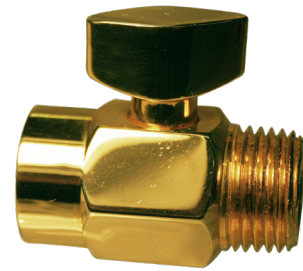
PC: \$69
Special Finishes: \$80

Available Finishes:

Standard Finish
■ PC

Special Finishes

■ PB
■ PN
■ SN
■ ORB
■ PCW
■ MB



1/2" DIVERTER VALVE FOR SHOWER ARM

SD765

- Diverter valve for shower arm
- 1/2" IPS inlet mounts to shower arm
- 1/2" IPS outlet in front for shower head
- 1/2" IPS outlet on side for hand shower hose
- Slide switch selects between shower heads

PC: \$95
Special Finishes: \$129

Available Finishes:

Standard Finish
■ PC

Special Finishes

■ PB
■ PN
■ SN
■ ORB
■ PCW
■ MB



72" BRASS SHOWER HOSE

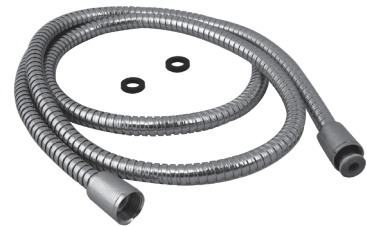
SH770

- Double-crimped brass hose exterior
- Knurled 1/2" cone fittings for secure mounting
- PVC liner for maximum durability

PC: \$90
Platinum: \$87

Available Finishes:

Standard Finish
■ 26 PC



72" SUPERFLEX PLASTIC SHOWER HOSE

SH772

- Easily cleaned smooth hose exterior
- 1/2" cone fittings for secure mounting
- Kink free hose with swivel ends

White: \$39
Other Finishes: \$39

Available Finishes:

Standard Finishes

■ PB
■ SN
■ PCW



72" SUPERFLEX EXTENDABLE SHOWER HOSE

SH774

- Easily cleaned smooth hose exterior
- 1/2" cone fittings for secure mounting
- Kink free hose with swivel ends
- Extends from 60 - 82 in. with EPDM liner
- SS202 stainless steel double crimped hose

PC: \$38
Special Finishes: \$70

Available Finishes:

Standard Finish
■ PC

Special Finishes

■ SN
■ ORB
■ MB



FRP REINFORCED ACRYLIC SHOWER PANS

36" X 36" 3-WALL SHOWER PAN

- 3 wall flanges with threshold
- Anti-skid surface floor
- Center drain with acrylic surface
- Warm to the touch
- Fiberglass and resin reinforced backing

Available Finishes:

Standard Finish

■ PC

Special Finishes

■ PBP

■ PB

■ PN

■ SN

■ ORB

■ PCW

■ MB



SPA3636 Plastic Body

PC: \$602

Special Finishes: \$635

SPA3636B Brass Body

PC: \$628

Special Finishes: \$664

SPG3636

Pan Only: \$580

48" X 36" 3-WALL SHOWER PAN

- 3 wall flanges with threshold
- Anti-skid surface floor
- Center drain with acrylic surface
- Warm to the touch
- Fiberglass and resin reinforced backing

Available Finishes:

Standard Finish

■ PC

Special Finishes

■ PBP

■ PB

■ PN

■ SN

■ ORB

■ PCW

■ MB



SPA4836 Plastic Body

PC: \$710

Special Finishes: \$721

SPA4836B Brass Body

PC: \$737

Special Finishes: \$773

SPG4836 Pan Only

Pan Only: \$689

60" X 36" 3-WALL SHOWER PAN

- 3 wall flanges with threshold
- Anti-skid surface floor
- Center drain with acrylic surface
- Warm to the touch
- Fiberglass and resin reinforced backing

Available Finishes:

Standard Finish

■ PC

Special Finishes

■ PBP

■ PB

■ PN

■ SN

■ ORB

■ PCW

■ MB



SPA6036 Plastic Body

PC: \$783

Special Finishes: \$831

SPA6036B Brass Body

PC: \$809

Special Finishes: \$846

SPG6036 Pan Only

Pan Only: \$761

72" X 36" 3-WALL SHOWER PAN

- 3 wall flanges with threshold
- Anti-skid surface floor
- Center drain with acrylic surface
- Warm to the touch
- Fiberglass and resin reinforced backing

Available Finishes:

Standard Finish

■ PC

Special Finishes

■ PBP

■ PB

■ PN

■ SN

■ ORB

■ PCW

■ MB



SPA7236 Plastic Body

PC: \$904

Special Finishes: \$948

SPA7236B Brass Body

PC: \$930

Special Finishes: \$967

SPG7236 Pan Only

Pan Only: \$882

FRP REINFORCED ACRYLIC SHOWER PANS

60" X 34" RIGHT HAND PAN

- 3 wall flanges with threshold
- Anti-skid surface floor
- Right hand drain outlet
- Warm to the touch
- Fiberglass and resin reinforced backing

Available Finishes:

Standard Finish

■ PC

Special Finishes

■ PBP

■ PB

■ PN

■ SN

■ ORB

■ PCW

■ MB



SPA6034R Plastic Body

PC: \$807

Special Finishes: \$840

SPA6034RB Brass Body

PC: \$834

Special Finishes: \$870

SPG6034R

Pan Only: \$785

60" X 34" LEFT HAND PAN

- 3 wall flanges with threshold
- Anti-skid surface floor
- Left hand drain outlet
- Warm to the touch
- Fiberglass and resin reinforced backing

Available Finishes:

Standard Finish

■ PC

Special Finishes

■ PBP

■ PB

■ PN

■ SN

■ ORB

■ PCW

■ MB



SPA6034L Plastic Body

PC: \$807

Special Finishes: \$840

SPA6034LB Brass Body

PC: \$834

Special Finishes: \$870

SPG6034L

Pan Only: \$785

SHOWER DRAINS

BRASS COMPRESSION SHOWER DRAIN

SD801

- Brass body shower drain
- Brass or stainless steel grate
- Fits 2" ABS or PVC pipe
- Uses keyed rubber compression gasket
- Drain rim fully covered by grate

PC: \$120

Special Finishes: \$162

Available Finishes:

Standard Finish
■ PC

Special Finishes

■ PBP
■ PB
■ PN
■ SN
■ ORB
■ PCW
■ MB



PVC COMPRESSION SHOWER DRAIN

SD802

- Plastic body shower drain
- Brass or stainless steel grate
- Fits 2" ABS or PVC pipe
- Uses keyed rubber compression gasket
- Drain rim fully covered by grate

PC: \$41

Special Finishes: \$79

Available Finishes:

Standard Finish
■ PC

Special Finishes

■ PBP
■ PB
■ PN
■ SN
■ ORB
■ PCW
■ MB



BRASS SWEDGE-LOCK SHOWER DRAIN

SD803

- Brass body shower drain
- Brass or stainless steel grate
- Fits 2" ABS or PVC pipe
- Uses driven no-caulk rubber swedge lock
- Drain rim fully covered by grate

PC: \$120

Special Finishes: \$162

Available Finishes:

Standard Finish
■ PC

Special Finishes

■ PBP
■ PB
■ PN
■ SN
■ ORB
■ PCW
■ MB



SQUARE PVC COMPRESSION SHOWER DRAIN

SD804

- Square brass grate pushes onto body
- Fits 2" ABS or PVC pipes
- Uses keyed rubber compression gasket
- Drain rim fully covered by grate
- Solid brass grate and PVC body

PC: \$52

Special Finishes: \$95

Available Finishes:

Standard Finish
■ PC

Special Finishes

■ PBP
■ SN
■ ORB
■ PCW
■ MB



SQUARE CAST BRASS COMPRESSION SHOWER DRAIN

SD805

- Square brass grate pushes onto body
- Fits 2" ABS or PVC pipes
- Uses keyed rubber compression gasket
- Drain rim fully covered by grate
- Solid brass grate and body

PC: \$129

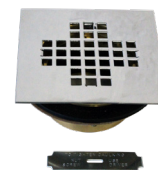
Special Finishes: \$172

Available Finishes:

Standard Finish
■ PC

Special Finishes

■ SN
■ ORB
■ PCW
■ MB



SQUARE SHOWER DRAIN COVER

SD806

- Square solid brass grate pushes onto body
- Fits 2" 206-B drains

PC: \$43

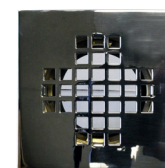
Special Finishes: \$85

Available Finishes:

Standard Finish
■ PC

Special Finishes

■ PN
■ ORB
■ SN
■ PCW
■ MB



SHOWER DRAIN COVER TRIMS

FLAT SNAP-IN SHOWER STRAINER

SD810

- Fiat style snap-in shower strainer
- 4-1/2" x 4-1/2"
- 3-1/8" prong-to-prong
- Brass

PC: \$59

Special Finishes: \$74

Available Finishes:

Standard Finish
■ PC

Special Finishes

■ PBP
■ PB
■ PN
■ SS
■ SN
■ PCW
■ ORB
■ MB



CASPER SNAP-IN SHOWER STRAINER

SD811

- Casper no. D109 style snap-in shower strainer
- 3-1/4" OD
- 2-7/8" prong-to-prong
- Brass

PC: \$41

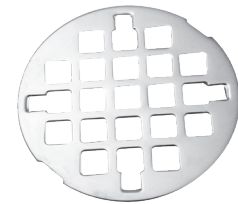
Special Finishes: \$56

Available Finishes:

Standard Finish
■ PC

Special Finishes

■ PBP
■ PB
■ PN
■ SS
■ SN
■ PCW
■ ORB
■ MB



CASPER SNAP-IN SHOWER STRAINER

SD812

- Casper no. 129 style snap-in shower strainer
- 4-1/4" OD
- 2-7/8" prong-to-prong
- Brass

PC: \$34

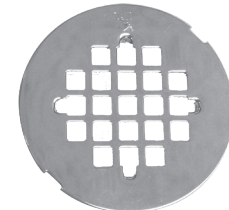
Special Finishes: \$51

Available Finishes:

Standard Finish
■ PC

Special Finishes

■ PBP
■ PB
■ PN
■ SS
■ SN
■ PCW
■ ORB
■ MB



FLORESTONE SNAP-IN SHOWER STRAINER

SD813

- Florestone style snap-in shower strainer
- 4-1/4" OD
- 3" prong-to-prong
- Brass

PC: \$33

Special Finishes: \$49

Available Finishes:

Standard Finish
■ PC

Special Finishes

■ PBP
■ PB
■ PN
■ SS
■ SN
■ PCW
■ ORB
■ MB



PLASTIC ODDITIES SHOWER STRAINER

SD814

- Plastic Oddities style shower strainer
- Screws included
- 4" OD
- 3-3/8" hole-to-hole

PC: \$34

Special Finishes: \$49

Available Finishes:

Standard Finish
■ PC

Special Finishes

■ PBP
■ PB
■ PN
■ SS
■ SN
■ PCW
■ ORB
■ MB



SHOWER DRAIN COVER TRIMS

PLASTIC ODDITIES SHOWER STRAINER

SD815

- Plastic Oddities style shower strainer
- Screws included
- 4-1/4" OD
- 2-5/8" hole-to-hole

PC: \$34

Special Finishes: \$49

Available Finishes:

Standard Finish

■ PC

Special Finishes

■ PBP

■ PB

■ PN

■ SS

■ SN

■ PCW

■ ORB

■ MB



AB&A SNAP-IN SHOWER STRAINER

SD816

- American Brass & Aluminum style snap-in shower strainer
- 4-1/4" OD
- 2-7/8" prong-to-prong
- Brass

PC: \$25

Special Finishes: \$33

Available Finishes:

Standard Finish

■ PC

Special Finishes

■ PBP

■ PB

■ PN

■ SS

■ SN

■ PCW

■ ORB

■ MB



SHOWER STRAINER SET GRILL & CROWN

SD817

- Deluxe shower drain trim with screws
- 2-7/8" hole-to-hole in grate
- 3-1/2" OD crown
- Fits Plumbing Products brand and similar 4T style drains

PC: \$49

Special Finishes: \$67

Available Finishes:

Standard Finish

■ PC

Special Finishes

■ PBP

■ PB

■ PN

■ SS

■ SN

■ PCW

■ ORB

■ MB



SHOWER STRAINER SET WITH TILE SQUARE

SD818

- Deluxe shower drain trim with screws
- 4-1/4" OD square
- 2-7/8" hole-to-hole in grate
- 3-1/2" OD crown
- Fits Plumbing Products brand and similar 4T style drains

PC: \$56

Special Finishes: \$74

Available Finishes:

Standard Finish

■ PC

Special Finishes

■ PBP

■ PB

■ PN

■ SS

■ SN

■ PCW

■ ORB

■ MB



SHOWER DRAIN COVER TRIMS

ROMAN TUB DRAIN

RD825

- Roman tub drain top only
- 2-7/8" hole center to center
- Two 8-32 x 1/2" screws included
- Solid brass
- Fits Oatey #151, Casper #140, and Plumbing Products EZ-Test 2 or equivalent drains

PC: \$129

Special Finishes: \$162

Available Finishes:

Standard Finish

■ PC

Special Finishes

■ PBP

■ PB

■ PN

■ SS

■ SN

■ PCW

■ ORB

■ MB



ROMAN TUB DRAIN WITH D315 TILE SQUARE

RD826

- Roman tub drain top only with tile square
- 2-7/8" hole center to center
- Two 8-32 x 1/2" screws included
- 4-1/4" square
- Fits Oatey #151, Casper #140, and Plumbing Products EZ-Test 2 or equivalent drains

PC: \$136

Special Finishes: \$188

Available Finishes:

Standard Finish

■ PC

Special Finishes

■ PBP

■ PB

■ PN

■ SS

■ SN

■ PCW

■ ORB

■ MB



BATH TUBS



SOLID SURFACE BATH TUBS

FREE STANDING OVAL BATH TUBS



FSO6935W/FSO6935MW 69" x 35" x 23" \$6,049

FSO6433W/FSO6433MW 64" x 33" x 23" \$5,807

FSO5831W/FSO5831MW 58" x 31" x 23" \$5,686

- White matte mineral filled acrylic solid surface finish
- Stone free standing bath tub with integral overflow
- Integrated lumbar support to buoy the body and relax the soul
- White matching 100 mm flat stone ADA compliant pop-up drain
- Drain cap sits flush with bath tub when shut
- Shipped palletized in plywood crate

S801W

• White matte mineral filled acrylic bench \$296

FREE STANDING RECTANGLE BATH TUBS



FSS6935W/FSS6935MW 69" x 35" x 23" \$6,049

FSS6433W/FSS6433MW 64" x 33" x 23" \$5,807

FSS5831W/ FSS5831MW 58" x 31" x 23" \$5,686

- White matte mineral filled acrylic solid surface finish
- Stone free standing bath tub with integral overflow
- Integrated lumbar support to buoy the body and relax the soul
- White matching 100 mm flat stone ADA compliant pop-up drain
- Drain cap sits flush with bath tub when shut
- Shipped palletized in plywood crate

Authorized Dealer Disclaimer

To ensure the authenticity and quality of our products, Westbrass only authorizes select dealers to sell our tubs. Purchases made through unauthorized dealers are not guaranteed to be genuine Westbrass products and may not be eligible for warranty or support services. Always verify that your dealer is an authorized Westbrass dealer before making a purchase.

For a list of authorized dealers or to confirm a dealer's status, please contact Westbrass customer support at 1-800-39-BRASS.

FREE STANDING TUBS

FREESTANDING TUB

Elevate your bathing experience with our exquisite FreeStanding Tub. Crafted with precision, this luxurious tub offers generous dimensions, providing ample space for relaxation. Immerse yourself in ultimate comfort and sophistication as you soak in the tranquil embrace of this stunning centerpiece. Experience the perfect blend of elegance and functionality with our FreeStanding Tub.



FSJ5832W

58" x 32" x 25.5"

White: \$6,255

Matte White: \$6,255

FSJ5832W

65" x 33" x 25.5"

White: \$6,388

Matte White: \$6,388

FSJ5832PWT

70" x 35" x 25.5"

White: \$6,654

Matte White: \$6,654

ACRYLIC OVAL TUB

Introducing our Acrylic Oval Tub - a luxurious Free-Standing Slipper Tub designed for both elegance and comfort. The tub's design boasts a sleek and modern touch with a linear integral overflow, seamlessly integrated for both functionality and aesthetic appeal. The pristine white finish adds a timeless elegance to your bathroom, creating a soothing and inviting atmosphere.



T036034-WH

60" x 34" x 26"

White: \$1,980

(with deck)

T036636-WH

66" x 36" x 27"

White: \$2,495

(with deck)

T036034ND-WH

60" x 34" x 26"

White: \$1,980

(with no deck)

T036636ND-WH

66" x 36" x 27"

White: \$2,495

(with no deck)

ALCOVE TUB WITH LINEAR OVERFLOW

T026031LR-WH

60" x 31" x 19"

\$1,200

T026031LL-WH

60" x 31" x 19"

\$1,200



ADDED ACCESSORIES FOR THIS KIT



D98LTC-W
Self Leveling
Tip-Toe Drain



ITD910A
Island Drain Tub
Waste Connection



S801W
Designer Bathing Seat

Authorized Dealer Disclaimer

To ensure the authenticity and quality of our products, Westbrass only authorizes select dealers to sell our tubs. Purchases made through unauthorized dealers are not guaranteed to be genuine Westbrass products and may not be eligible for warranty or support services. Always verify that your dealer is an authorized Westbrass dealer before making a purchase.

For a list of authorized dealers or to confirm a dealer's status, please contact Westbrass customer support at 1-800-39-BRASS.

TRUE SOLID SURFACE BATH STOOLS

TRUE SOLID SURFACE BATH STOOLS



BLACK



WHITE

S801B

16.54" x 8.66" x 17"

Matte Black Interior & Exterior

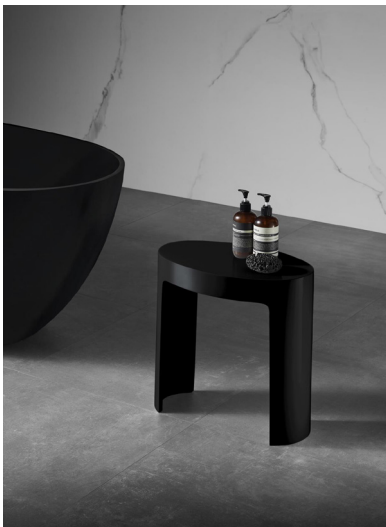
\$296

S801W

16.54" x 8.66" x 17"

Matte White Interior & Exterior

\$296



BLACK



WHITE

S805B

19.63" x 9.84" x 16.9"

Matte Black Interior & Exterior

\$369

S805W

19.63" x 9.84" x 16.9"

Matte White Interior & Exterior

\$369

TRUE SOLID SURFACE BATH STOOLS

S806B

16.5" x 9" x 16.93"

Matte Black Interior & Exterior

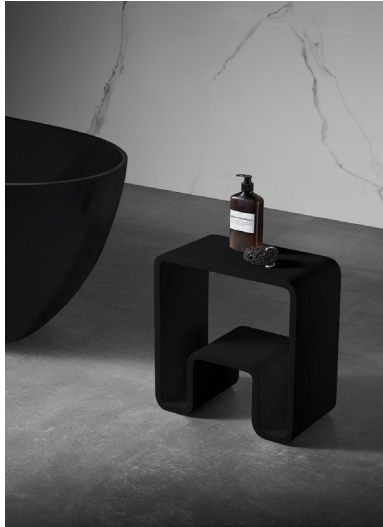
\$379

S806W

16.5" x 9" x 16.93"

Matte White Interior & Exterior

\$379



BLACK



WHITE

S807B

16.9" x 11.81" x 16"

Matte Black Interior & Exterior

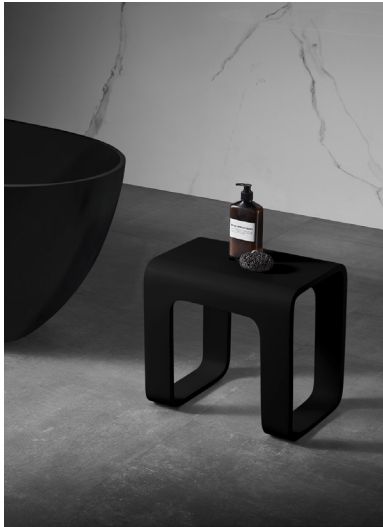
\$369

S807W

16.9" x 11.81" x 16"

Matte White Interior & Exterior

\$369



BLACK



WHITE

GEL TUB PILLOWS



GPLW-WH



GPLW-BK

- Gel Cushioning
- Waterproof Design
- Enhanced Relaxation

Standard Finish: \$259

TUB DRAINS FOR INTEGRATED OVERFLOW BATH TUBS

INTEGRATED OVERFLOW TIP-TOE TUB DRAIN

TD900

- 1-1/2" NPSM tip-toe tub drain
- Requires integrated overflow tubs
- Includes nut, tapered and sponge washers and friction fiber washer

PC: \$187
Special Finishes: \$220

Available Finishes:

- Standard Finish
■ PC
- Special Finishes
■ PBP
■ PN
■ SN
■ ORB
■ SS
■ PCW
■ MB



INTEGRATED OVERFLOW TIP-TOE TUB WITH ADAPTER

TD901 For PVC Adapter

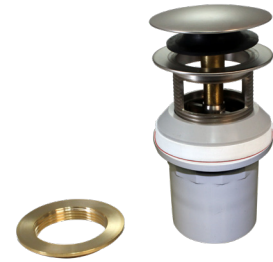
- 1-1/2" NPSM tip-toe tub drain
- Use "P" for PVC and "A" ABS glue in fitting
- Requires integrated overflow tubs

PC: \$193
Special Finishes: \$226

TD901-A For ABS Adapter

Available Finishes:

- Standard Finish
■ PC
- Special Finishes
■ PBP
■ PN
■ SN
■ ORB
■ SS
■ PCW
■ MB



INTEGRATED OVERFLOW TIP-TOE TUB WITH TUBE

TD902

- 1-1/2" NPSM tip-toe tub drain
- 1-1/2" x 6" tubular 17 ga. brass extension
- Designed for slip joint or island drain installation
- Requires integrated overflow tubs

PC: \$193
Special Finishes: \$226

Available Finishes:

- Standard Finish
■ PC
- Special Finishes
■ PBP
■ PN
■ SN
■ ORB
■ SS
■ PCW
■ MB



INTEGRATED ILLUSIONARY CHANNEL TIP-TOE

TD903 For PVC Adapter

- 1-1/2" NPSM tip-toe tub drain
- Illusionary overflow cover for round overflows
- Use "P" for PVC and "A" ABS glue in fitting
- Requires integrated overflow tubs

PC: \$219
Special Finishes: \$244

TD903-A For ABS Adapter

Available Finishes:

- Standard Finish
■ PC
- Special Finishes
■ PBP
■ PN
■ SN
■ ORB
■ SS
■ PCW
■ MB



ISLAND DRAIN FOR INTEGRATED OVERFLOW TUBS

ITD910A

- ABS
- Includes flanged and threaded tube
- Silicone grease
- 2" x 1-1/2" reducer bushing
- 6 stainless steel screws
- Trap adapter with nut and gasket

Standard Finish: \$241

ITD910P

- PVC
- Includes flanged and threaded tube
- Silicone grease
- 2" x 1-1/2" reducer bushing
- 6 stainless steel screws
- Trap adapter with nut and gasket

Standard Finish: \$241



BRASS TUB SPOUTS

5-1/2" BRASS TUB SPOUT

TS920

- Tub spout
- 5-1/2" reach
- Rear threads
- Fits 1/2" IPS
- Brass construction

PC: \$102
Special Finishes: \$136

Available Finishes:

Standard Finish

■ PC

Special Finishes

■ PBP

■ PN

■ SN

■ ORB

■ PCW

■ MB



5" BRASS NOSE DIVERTER TUB SPOUT

TS921

- Diverter tub spout
- 5" reach
- Nose threads
- Fits 1/2" IPS
- Brass construction

PC: \$120
Special Finishes: \$154

Available Finishes:

Standard Finish

■ PC

Special Finishes

■ PBP

■ PN

■ SN

■ ORB

■ PCW

■ MB



5-1/2" BRASS REAR DIVERTER TUB SPOUT

TS922

- Tub spout
- 5-1/2" reach
- Rear threads
- Fits 1/2" IPS or 3/4" IPS with brass bushing
- Brass construction

PC: \$211
Special Finishes: \$293

Available Finishes:

Standard Finish

■ PC

Special Finishes

■ PBP

■ PN

■ SN

■ ORB

■ PCW

■ MB



8-1/2" BRASS REAR DIVERTER TUB SPOUT

TS923

- Diverter tub spout
- 8-1/2" reach
- Rear threads
- Fits 1/2" IPS or 3/4" IPS with brass bushing
- Brass construction

PC: \$260
Special Finishes: \$326

Available Finishes:

Standard Finish

■ PC

Special Finishes

■ SN

■ ORB

■ MB



7 INCH TUB SPOUTS

7" EXTENDED TUB SPOUT

TS924

- Tub spout, 7 inch reach
- 1/2" IPS front threads
- Fits 1/2" nipple
- Zinc construction

PC: \$61

Special Finishes: \$82

Available Finishes:

Standard Finish

■ PC

Special Finishes

■ PBP

■ SN

■ ORB

■ MB



7" EXTENDED TUB SPOUT FOR COPPER PIPE

TS925

- Tub spout, 7 inch reach
- 1/2" copper nipple
- Fits 1/2" copper stub out
- Zinc construction

PC: \$61

Special Finishes: \$82

Available Finishes:

Standard Finish

■ PC

Special Finishes

■ PBP

■ SN

■ ORB

■ MB



7" EXTENDED DIVERTER TUB SPOUT

TS926

- Diverter tub spout, 7 inch reach
- 1/2" IPS front threads
- Fits 1/2" nipple
- Zinc construction

PC: \$82

Special Finishes: \$115

Available Finishes:

Standard Finish

■ PC

Special Finishes

■ PBP

■ SN

■ ORB

■ MB



7" EXTENDED DIVERTER TUB SPOUT FOR COPPER

TS927

- Diverter tub spout, 7 inch reach
- 1/2" copper nipple
- Fits 1/2" copper stub out
- Zinc construction

PC: \$82

Special Finishes: \$115

Available Finishes:

Standard Finish

■ PC

Special Finishes

■ PBP

■ SN

■ ORB

■ MB



5" ZINC TUB SPOUT FOR IPS CONNECTION

TS928

- Tub spout, 5 inch reach
- 1/2" copper nipple
- Fits 1/2" copper stub out
- Zinc construction

PC: \$23

Special Finishes: \$41

Available Finishes:

Standard Finish

■ PC

Special Finishes

■ PBP

■ SN

■ ORB

■ MB



5" ZINC DIVERTER TUB SPOUT FOR IPS CONNECTION

TS929

- Diverter tub spout, 5 inch reach
- 1/2" copper nipple
- Fits 1/2" copper stub out
- Zinc construction

PC: \$25

Special Finishes: \$49

Available Finishes:

Standard Finish

■ PC

Special Finishes

■ PBP

■ SN

■ ORB

■ MB





WASTE & OVERFLOW

LINEAR OVERFLOW BATH WASTE

22" LINEAR OVERFLOW BATH WASTE

TD930

This exquisite brass drain features a linear overflow shape, allowing the tub to maintain that modern elegance reflected by true lines and curves. The tub drain uses a European tip-toe drain for a stylish, modern, and classic overflow appearance

Press drain to close, press again to open. 17 gauge brass tubes making this ideal for extra deep or very long tub runs. Finished trim - unfinished rough-in.

- 1-1/2" unfinished brass tubular bath waste assembly
- 22" maximum make-up with 17 ga. brass tubes
- European tip-toe push drain for tub closure
- Fits a standard bath drain with a linear overflow
- Finished trim - unfinished rough-in
- Includes 3" tailpiece, cast brass tee and elbows

Available Finishes:

Standard Finish

■ PC

Special Finishes

■ PN

■ SN

■ ORB

■ MB

PC: \$293

Special Finishes: \$325



22" BALL JOINT LINEAR OVERFLOW BATH WASTE

TD931

This exquisite brass drain features a linear overflow with Ball Joint, allowing the tub to effectively seal and maintain that modern elegance reflected by true lines and curves. The tub drain uses a European tip-toe drain for a stylish, modern, and classic overflow appearance.

Press drain to close, press again to open. 17 gauge brass tubes making this ideal for extra deep or very long tub runs. Finished trim - unfinished rough-in.

- 1-1/2" unfinished brass tubular bath waste assembly
- 22" maximum make-up with 17 gauge brass tubes
- European tip-toe push drain for tub closure
- Low profile for narrow tub rims
- Fits a standard bath drain with a linear overflow
- Finished trim - unfinished rough-in
- Includes 3" tailpiece, cast brass tee and elbows
- ADA approved drain closure

Available Finishes:

Standard Finish

■ PC

Special Finishes

■ PN

■ SN

■ ORB

PC: \$388

Special Finishes: \$416



22" FULLY FINISHED LINEAR BALL JOINT TIP-TOE BATH WASTE & OVERFLOW

TD932

The Linear bath waste overflow by Westbrass features a sleek, linear overflow cover which beautifully finishes the inside of the tub rim. The ADA approved tip-toe drain is easy to operate; press once to close, and again to open the drain. This drain type is the easiest to use for all bathers.

Fully finished on its exterior, this drain is designed to stand out and accent the bathing well for all exposed installations. The finished ball joint allows the overflow elbow to neatly meet the exterior of the tub, and the hidden screws make the exterior look truly elegant.

- Fully exposed bath waste ball joint elbow
- Concealed silicone gasket familiar to plumbers
- Overflow plate seals to bathtub using concealed screws for polished appearance
- Ball joint flexes to a wide variety of angles for perfect installations
- 6" finished tailpiece trims to floor using a hi-box flange for easier installation

Available Finishes:

Standard Finish

■ PC

Special Finishes

■ PN

■ SN

■ ORB

PC: \$572

Special Finishes: \$604



LINEAR OVERFLOW LOW PROFILE

LINEAR SCH 40 PVC WASTE & OVERFLOW

TD934

- 22-1/2" maximum make-up tub waste
- 1" overflow tube with linear spacer
- ADA approved tip-toe drain trim for easy sealing
- Sleek, oversized tip-toe cover
- Includes 4", 12" and 19" cut able pipes

PC: \$139

Special Finishes: \$152

Available Finishes:

Standard Finish

■ PC

Special Finishes

■ PB

■ PN

■ SN

■ ORB



LINEAR SCH 40 PVC HIDDEN WASTE & OVERFLOW

TD935

- 22-1/2" maximum make-up tub waste
- 1" overflow tube with linear spacer
- ADA approved tip-toe drain trim for easy sealing
- Sleek, oversized tip-toe cover
- Includes 4", 12" and 19" cut able pipes

PC: \$139

Special Finishes: \$172

Available Finishes:

Standard Finish

■ PC

Special Finishes

■ PB

■ PN

■ SN

■ ORB



LINEAR SCH 40 PVC WASTE & OVERFLOW

TD936

- Stylish, Modern, Linear Drain
- Classic, clean overflow appearance
- Modern styling fits today's high-end tubs
- 3/8" x 3-1/2" tub groove required
- Solvent weld using Primer and PVC Cement
- European tip-toe push drain for tub closure
- ADA approved drain closure
- Sch. 40 PVC non-corroding pipe
- Glue in pipe with finished trim

PC: \$146

Special Finishes: \$172

Available Finishes:

Standard Finish

■ PC

Special Finishes

■ PBP

■ SN

■ PCW

■ ORB

■ MB



LINEAR WASTE & OVERFLOW PLUMBER'S PACK

TD937PP

- Stylish, Modern, Linear Drain
- Classic, clean overflow appearance
- Modern styling fits today's high-end tubs
- 3/8" x 3-1/2" tub groove required
- Solvent weld using Primer and PVC Cement
- European tip-toe push drain for tub closure
- ADA approved drain closure
- Sch. 40 PVC non-corroding pipe
- Glue in pipe with finished trim

PC: \$123

Special Finishes: \$156

Available Finishes:

Standard Finish

■ PC

Special Finishes

■ PBP

■ SN

■ PCW

■ ORB

■ MB



PATENTED DEEP SOAK-CLOSING OVERFLOW

TD938

This exquisite PVC drain features a closing overflow, allowing the tub to be, "over-filled" for that extra deep soak; required to ease both mind and body.

The drain can be used in 3 ways. Fill your tub and use as normal overflow (Fig. 1). Rotate the overflow once and your tub can fill higher (Fig. 2). Rotate again, and the water can completely cover the overflow for the ultimate in luxurious bathing (Fig. 3). The tub drain uses a European tip-toe drain. Easy to use: press once to close and again to open. Sch. 40 PVC non-corroding fittings and pipes glue together for complete adjustability, making this ideal for extra deep or very long runs.

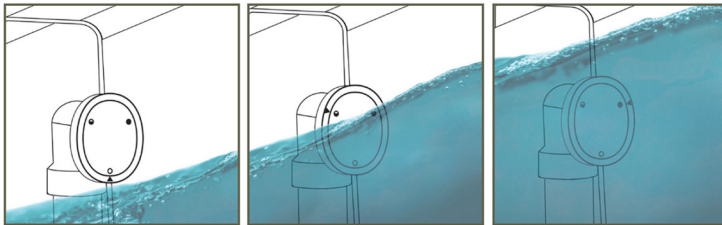


Figure 1

Figure 2

Figure 3

- 1-1/2" Sch. 40 PVC pipes and fittings
- European tip-toe push drain for tub closure
- Fits standard tub openings
- Glue in pipe with finished trim
- Rotating overflow for extra-deep tub soak
- ADA approved drain closure
- No-hole round overflow faceplate

PC: \$147

Special Finishes: \$195

Available Finishes:

Standard Finish

■ PC

Special Finishes

■ SN

■ ORB

■ PCW



ALL BRASS BALL JOINT TIP-TOE WITH PATENTED DEEP SOAK-CLOSING OVERFLOW

TD939

This ball joint bath waste overflow by Westbrass features our unique patented no-hole closing overflow, which beautifully finishes the inside of the tub rim and allows the tub to be over-filled, for that extra deep soak.

PC: \$408

Special Finishes: \$441

Available Finishes:

Standard Finish

■ PC

Special Finishes

■ SN

■ PCW

■ ORB

■ MB



PATENTED DEEP SOAK-CLOSING OVERFLOW BRASS BATH WASTE

TD940

- Fully-finished for all-exposed installations
- Rotate overflow to partially or fully close the overflow
- ADA approved drain closure
- 17 ga. brass tubing with cast brass fittings

PC: \$434

Special Finishes: \$516

TD941

- With ball joint

PC: \$434

Special Finishes: \$516

Available Finishes:

Standard Finish

■ PC

Special Finishes

■ SN

■ PCW

■ ORB

■ MB



DEEP SOAK DRAINS

DEEP SOAK BRASS WITH TIP-TOE OVERFLOW

TD942

- Rotating overflow for extra-deep tub soak
- Turn once to partially close and again to completely close the overflow
- Overflow plate seals to bathtub using concealed screws for a more polished appearance.
- ADA approved oversized tip-toe drain stopper for easy use, press once to close and again to open drain.

PC: \$303
 Special Finishes: \$336

Available Finishes:

Standard Finish
 ■ PC

Special Finishes

■ SN
 ■ PCW
 ■ ORB
 ■ MB



28" ILLUSIONARY TIP-TOE WITH BALL JOINT

TD943

- 28" maximum make-up tub waste
- Ball Joint for overflow adjustability
- Illusionary faceplate - No Holes
- 1-1/2" oversized tip-toe drain plug
- ADA approved drain plug
- Trim parts finished & includes 3" tailpiece
- 17 ga. brass tubes & cast brass fittings

PC: \$303
 Special Finishes: \$336

Available Finishes:

Standard Finish
 ■ PC

Special Finishes

■ PN
 ■ SN
 ■ ORB
 ■ PCW
 ■ MB



28" FINISHED ILLUSIONARY TIP-TOE WITH BALL JOINT

TD944

- 28" maximum make-up tub waste
- 24" trimmable overflow and waste tube
- Ball Joint for overflow adjustability
- Elbow hides overflow screws - finished look
- Illusionary faceplate - No Holes
- 1-1/2" oversized tip-toe drain plug
- ADA approved drain plug
- Fully finished, includes 6" tailpiece & flange
- 17 ga. brass tubes & cast brass fittings

PC: \$441
 Special Finishes: \$473

Available Finishes:

Standard Finish
 ■ PC

Special Finishes

■ PN
 ■ SN
 ■ ORB
 ■ PCW
 ■ MB



SEMI-EXPOSED BRASS BATH WASTE

SEMI-EXPOSED TIP-TOE DIRECT CONNECT

TD945

- 24" maximum make-up tub waste
- 1-1/2" tip-toe drain plug
- Illusionary faceplate - No-holes
- Semi-Exposed style
- All exposed parts finished
- 17 ga. brass for under floor drain
- Includes high box flange for arm

PC: \$427
Special Finishes: \$465

Available Finishes:

Standard Finish
■ PC

Special Finishes
■ PB
■ PN
■ SN
■ ORB
■ PCW
■ MB



SEMI-EXPOSED BALL JOINT TIP-TOE DIRECT CONNECT

TD946

- 24" maximum make-up tub waste
- 1-1/2" tip-toe drain plug
- Illusionary faceplate - No-holes
- Semi-Exposed style
- All exposed parts finished
- 17 ga. brass for under floor drain
- Includes high box flange for arm

PC: \$555
Special Finishes: \$588

Available Finishes:

Standard Finish
■ PC

Special Finishes
■ PB
■ PN
■ SN
■ ORB
■ PCW
■ MB



SEMI-EXPOSED TIP-TOE BW&O

TD947

- 22-1/2" maximum make-up tub waste
- 1-1/2" tip toe drain plug
- Illusionary faceplate - No Holes
- Semi-exposed style
- All exposed parts finished
- ABS under floor drain
- 17 ga. exposed brass tube
- ABS pipe not included

PC: \$224
Special Finishes: \$257

Available Finishes:

Standard Finish
■ PC

Special Finishes
■ PB
■ PN
■ SN
■ ORB
■ PCW
■ MB



SEMI-EXPOSED BALL JOINT TIP-TOE BW&O

TD948

- 22-1/2" maximum make-up tub waste
- 1-1/2" tip toe drain plug
- Illusionary faceplate - No Holes
- Semi-exposed style
- All exposed parts finished with ball joint
- ABS under floor drain
- 17 ga. exposed brass tube
- ABS pipe not included

PC: \$359
Special Finishes: \$391

Available Finishes:

Standard Finish
■ PC

Special Finishes
■ PB
■ PN
■ SN
■ ORB
■ PCW
■ MB



ILLUSIONARY BRASS BATH WASTE & OVERFLOW

14" ILLUSIONARY TIP-TOE

TD949

- 14" maximum make-up tub waste
- Illusionary faceplate - No Holes
- 1-1/2" oversized tip-toe drain plug
- ADA approved closure
- Trim parts finished
- Includes 3" tailpiece
- 17 ga. brass tubes
- Cast brass tee and elbows

PC: \$252
Special Finishes: \$285

Available Finishes:

Standard Finish
■ PC

Special Finishes

■ PBP
■ PB
■ PN
■ SN
■ PCW
■ ORB
■ MB



22" ILLUSIONARY TIP-TOE

TD950

- 22-1/2" maximum make-up tub waste
- Illusionary faceplate - No Holes
- 1-1/2" oversized tip-toe drain plug
- ADA approved closure
- Trim parts finished & includes 3" tailpiece
- 17 ga. brass tubes
- Cast brass tee and elbows

PC: \$275
Special Finishes: \$308

Available Finishes:

Standard Finish
■ PC

Special Finishes

■ PBP
■ PB
■ PN
■ SN
■ PCW
■ ORB
■ MB



14" ILLUSIONARY LIFT & TURN

TD951

- 14" maximum make-up tub waste
- 1-1/2" lift & turn plug
- Illusionary faceplate - No Holes
- Trim parts finished
- Includes 3" tailpiece
- 17 ga. brass tubes
- Cast brass tee and elbows

PC: \$252
Special Finishes: \$285

Available Finishes:

Standard Finish
■ PC

Special Finishes

■ PBP
■ PB
■ PN
■ SN
■ PCW
■ ORB
■ MB



22" ILLUSIONARY LIFT & TURN

TD952

- 22-1/2" maximum make-up tub waste
- 1-1/2" lift & turn plug
- Illusionary faceplate - No Holes
- Trim parts finished
- Includes 3" tailpiece
- 17 ga. brass tubes
- Cast brass tee and elbows

PC: \$275
Special Finishes: \$308

Available Finishes:

Standard Finish
■ PC

Special Finishes

■ PBP
■ PB
■ PN
■ SN
■ PCW
■ ORB
■ MB



ILLUSIONARY SCH. 40 WASTE & OVERFLOWS

ABS ILLUSIONARY TIP-TOE

TD953

- 14" maximum make-up tub waste
- Illusionary faceplate - No Holes
- 1-1/2" oversized tip-toe drain plug
- ADA approved stopper
- Trim parts finished
- Includes 4" tailpiece

PC: \$123

Special Finishes: \$156

Available Finishes:

Standard Finish

■ PC

Special Finishes

■ PBP

■ PB

■ PN

■ SN

■ PCW

■ ORB

■ MB



PVC ILLUSIONARY TIP-TOE

TD954

- 14" maximum make-up tub waste
- Illusionary faceplate - No Holes
- 1-1/2" oversized tip-toe drain plug
- ADA approved stopper
- Trim parts finished
- Includes 4" tailpiece
- Sch. 40 PVC tee, pipe and elbows

PC: \$123

Special Finishes: \$156

Available Finishes:

Standard Finish

■ PC

Special Finishes

■ PBP

■ PB

■ PN

■ SN

■ PCW

■ ORB

■ MB



ABS ILLUSIONARY LIFT & TURN

TD955

- 14" maximum make-up tub waste
- Illusionary faceplate - No Holes
- 1-1/2" pull & drain plug
- Positive drain seal
- Trim parts finished
- Includes 4" tailpiece
- Sch. 40 ABS tee, pipe and elbows

PC: \$123

Special Finishes: \$156

Available Finishes:

Standard Finish

■ PC

Special Finishes

■ PBP

■ PN

■ SN

■ PCW

■ ORB

■ MB



PVC ILLUSIONARY LIFT & TURN

TD956

- 14" maximum make-up tub waste
- Illusionary faceplate - No Holes
- 1-1/2" pull & drain plug
- Positive drain seal
- Trim parts finished
- Includes 4" tailpiece
- Sch. 40 PVC tee, pipe and elbows

PC: \$123

Special Finishes: \$156

Available Finishes:

Standard Finish

■ PC

Special Finishes

■ PBP

■ PN

■ SN

■ PCW

■ ORB

■ MB



ALL EXPOSED ILLUSIONARY BRASS BATH WASTE

22" ALL EXPOSED ILLUSIONARY TIP-TOE

TD957

- 22-1/2" maximum make-up - 17 ga. brass tubes
- Oversized tip-toe drain plug for sleek coverage
- ADA approved drain closure
- All exposed style with all parts finished
- Includes 6" tailpiece
- High box sure-grip flange for base
- Cast brass drain elbow, tee and nuts
- Machined brass ball-joint adjusts to any tub
- Cast brass overflow elbow with hidden silicone washer

PC: \$490
Special Finishes: \$522

Available Finishes:

Standard Finish
■ PC

Special Finishes

■ PBP
■ PB
■ PN
■ SN
■ PCW
■ ORB
■ MB



22" ALL EXPOSED ILLUSIONARY TIP-TOE

TD958

- 22-1/2" maximum make-up - 17 gauge brass tubes
- 1-1/2" tip toe drain plug - ADA approved
- Illusionary faceplate - No Holes
- All exposed style with all parts finished
- Includes 6" tailpiece
- High box flange for base

PC: \$383
Special Finishes: \$424

Available Finishes:

Standard Finish
■ PC

Special Finishes

■ PBP
■ PB
■ PN
■ SN
■ PCW
■ ORB
■ MB



22" ALL EXPOSED PULL & DRAIN

TD959

- 22-1/2" maximum make-up - 17 ga. brass tubes
- 1-1/2" pull & drain plug
- Illusionary faceplate - No Holes
- All exposed style - all parts finished
- Includes 6" tailpiece
- High box flange for base

PC: \$424
Special Finishes: \$424

Available Finishes:

Standard Finish
■ PC

Special Finishes

■ PBP
■ PB
■ PN
■ SN
■ PCW
■ ORB
■ MB



14" ALL EXPOSED TIP-TOE

TD960

- 14" maximum make-up - 17 ga. brass tubes
- Illusionary faceplate - No Holes
- 1-1/2" oversized tip-toe drain plug
- ADA approved drain plug
- All exposed style - all parts finished
- Includes 6" tailpiece and high box flange for base

PC: \$359
Special Finishes: \$391

Available Finishes:

Standard Finish
■ PC

Special Finishes

■ PBP
■ PB
■ PN
■ SN
■ PCW
■ ORB
■ MB



14" ALL EXPOSED PULL & DRAIN

TD961

- 14" maximum make-up - 17 ga. brass tubes
- 1-1/2" pull & drain plug
- Illusionary faceplate - No Holes
- All exposed style - all parts finished
- Includes 6" tailpiece
- High box flange for base

PC: \$359
Special Finishes: \$391

Available Finishes:

Standard Finish
■ PC

Special Finishes

■ PBP
■ PB
■ PN
■ SN
■ PCW
■ ORB
■ MB



SOLDER IN WASTE & OVERFLOWS

SOLDER IN TIP-TOE WASTE & OVERFLOW

TD962

- 19" maximum vertical make-up tub waste
- 11" maximum horizontal rough-in
- 17 ga. brass telescoping fittings for ultimate adjustment
- Illusionary no-hole faceplate give elegant tub wall finish
- ADA tip-toe tub drain trim for easy sealing and use
- Does not require access panel for most tub installations

PC: \$285

Special Finishes: \$297

Available Finishes:

Standard Finish
■ PC

Special Finishes

■ PBP
■ PB
■ PN
■ SN
■ ORB
■ MB



SOLDER IN WASTE & OVERFLOW

TD963

- 19" maximum vertical make-up tub waste
- 11" maximum horizontal rough-in
- 17 ga. brass telescoping fittings for ultimate adjustment
- Illusionary no-hole faceplate give elegant tub wall finish
- Lift and turn drain trim for easy sealing
- Does not require access panel for most tub installations

PC: \$297

Special Finishes: \$297

Available Finishes:

Standard Finish
■ PC

Special Finishes

■ PBP
■ PB
■ PN
■ SN
■ ORB
■ MB



TD964R (Rough Only)

Rough Finish: \$217

SPECIALTY BRASS BATH WASTE & OVERFLOW

ILLUSIONARY ALL EXPOSED WASTE & OVERFLOW

TD965

- 18" maximum make-up tub waste
- Modern elbow for exposed installation
- Direct connect shoe outlet with flange
- ADA approved tip-toe drain trim for easy sealing
- 17 ga. fully finished brass tubes

PC: \$471
Special Finishes: \$487

Available Finishes:

Standard Finish
■ PC

Special Finishes

■ PB
■ PN
■ SN
■ ORB
■ MB



ILLUSIONARY PULL & DRAIN WASTE & OVERFLOW

TD966

- 14" maximum make-up tub waste
- 17 ga. brass above floor tee outlet
- Uses two-hole top elbow and no-hole cover
- Lift and turn closure for positive sealing
- 6" tailpiece and flange included

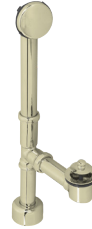
PC: \$359
Special Finishes: \$391

Available Finishes:

Standard Finish
■ PC

Special Finishes

■ PB
■ PN
■ SN
■ ORB
■ MB



ILLUSIONARY PULL & DRAIN WASTE & OVERFLOW

TD967

- 22" maximum make-up tub waste
- 17 ga. brass above floor tee outlet
- Uses two-hole top elbow and no-hole cover
- Lift and turn closure for positive sealing
- 6" tailpiece and flange included

PC: \$378
Special Finishes: \$378

Available Finishes:

Standard Finish
■ PC

Special Finishes

■ PB
■ PN
■ SN
■ ORB
■ MB



DIRECT CONNECT WASTE & OVERFLOW

TD968

- 18" maximum make-up tub waste
- Direct connect shoe outlet
- ADA approved tip-toe drain trim for easy sealing
- 17 gauge brass tubes

PC: \$224
Special Finishes: \$242

7931817LT-DC (Rough Only)

Rough Finish: \$216

Available Finishes:

Standard Finish
■ PC

Special Finishes

■ PB
■ PN
■ SN
■ ORB
■ PCW
■ MB



ABOVE FLOOR WASTE & OVERFLOW

TD970

- 18" maximum make-up tub waste
- 17 ga. brass above floor tee outlet
- Uses two-hole faceplate
- ADA approved tip-toe drain trim for easy sealing

PC: \$224
Special Finishes: \$242

TD971R (Rough Only)

Rough Finish: \$216

Available Finishes:

Standard Finish
■ PC

Special Finishes

■ PB
■ PN
■ SN
■ ORB
■ PCW
■ MB



TWIST & CLOSE BATH WASTE & OVERFLOW

17 GAUGE TWIST & CLOSE BATH WASTE

TD972

- 14" maximum make-up tub waste
- 1-1/2" twist & close drain plug
- Two-hole faceplate
- Trim only finished
- Heavy duty metal construction
- 17 ga. brass tubes

PC: \$198
Special Finishes: \$244

Available Finishes:

Standard Finish
■ PC

Special Finishes

■ PB
■ PN
■ SN
■ ORB
■ SS
■ PCW
■ MB



20 GAUGE TWIST & CLOSE BATH WASTE

TD973

- 14" maximum make-up tub waste
- 1-1/2" twist & close drain plug
- Two-hole faceplate
- Trim only finished
- Heavy duty metal construction
- 20 ga. brass tubes

PC: \$178
Special Finishes: \$228

Available Finishes:

Standard Finish
■ PC

Special Finishes

■ PB
■ PN
■ SN
■ ORB
■ SS
■ PCW
■ MB



FULLY FINISHED 17 GAUGE TWIST & CLOSE BATH WASTE

TD974

- 14" maximum make-up tub waste
- 1-1/2" twist & close drain plug
- Two hole faceplate
- All exposed style
- All parts finished
- Includes 6" tailpiece
- High box flange
- 17 ga. brass tubes

PC: \$310
Special Finishes: \$342

Available Finishes:

Standard Finish
■ PC

Special Finishes

■ PB
■ PN
■ SN
■ ORB
■ SS
■ PCW
■ MB



TWIST & CLOSE BATH WASTE & OVERFLOW

17 GAUGE TWIST & CLOSE BATH WASTE

TD975

- 22-1/2" maximum make-up tub waste
- 1-1/2" twist & close drain plug
- Two-hole faceplate
- Trim only finished
- Heavy duty metal construction
- 17 ga. brass tubes

PC: \$221
Special Finishes: \$254

Available Finishes:

Standard Finish

■ PC

Special Finishes

■ PB

■ PN

■ SN

■ ORB

■ SS

■ PCW

■ MB



20 GAUGE TWIST & CLOSE BATH WASTE

TD976

- 22-1/2" maximum make-up tub waste
- 1-1/2" twist & close drain plug
- Two-hole faceplate
- Trim only finished
- Heavy duty metal construction
- 20 ga. brass tubes

PC: \$188
Special Finishes: \$244

Available Finishes:

Standard Finish

■ PC

Special Finishes

■ PB

■ PN

■ SN

■ ORB

■ SS

■ PCW

■ MB



FULLY FINISHED 17 GAUGE TWIST & CLOSE BATH WASTE

TD977

- 22-1/2" maximum make-up tub waste
- 1-1/2" twist & close drain plug
- Two-hole faceplate
- All exposed style
- All parts finished
- Includes 6" tailpiece
- High box flange
- 17 ga. brass tubes

PC: \$326
Special Finishes: \$362

Available Finishes:

Standard Finish

■ PC

Special Finishes

■ PB

■ PN

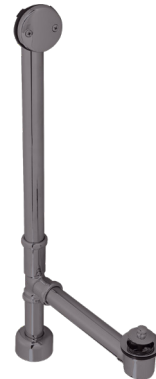
■ SN

■ ORB

■ SS

■ PCW

■ MB



TRIP LEVER BATH WASTE & OVERFLOW

17 GAUGE TRIP LEVER BATH WASTE

TD978

- 14" maximum make-up tub waste
- 1-1/2" beehive grid drain plug
- Trip lever faceplate
- Trim only finished
- Heavy duty metal construction
- 17 ga.brass tubes

PC: \$205

Special Finishes: \$237

Available Finishes:

Standard Finish
■ PC

Special Finishes

■ PB
■ PN
■ SN
■ ORB
■ SS
■ PCW
■ MB



20 GAUGE TRIP LEVER BATH WASTE

TD979

- 14" maximum make-up tub waste
- 1-1/2" beehive grid drain plug
- Trip lever faceplate
- Trim only finished
- Heavy duty metal construction
- 20 ga. brass tubes

PC: \$187

Special Finishes: \$219

Available Finishes:

Standard Finish
■ PC

Special Finishes

■ PB
■ PN
■ SN
■ ORB
■ SS
■ PCW
■ MB



FULLY FINISHED 17 GAUGE TRIP LEVER BATH WASTE

TD980

- 14" maximum make-up tub waste
- 1-1/2" beehive grid drain plug
- Trip lever faceplate
- All exposed style
- All parts finished
- Includes 6" tailpiece
- High box flange
- 17 ga. brass tubes

PC: \$326

Special Finishes: \$362

Available Finishes:

Standard Finish
■ PC

Special Finishes

■ PB
■ PN
■ SN
■ ORB
■ SS
■ PCW
■ MB



TRIP LEVER BATH WASTE & OVERFLOW

17 GAUGE TRIP LEVER BATH WASTE

TD981

- 22-1/2" maximum make-up tub waste
- 1-1/2" beehive grid drain plug
- Trip lever faceplate
- Trim only finished
- Heavy duty metal construction
- 17 ga. brass tubes

PC: \$231
Special Finishes: \$264

Available Finishes:

Standard Finish

■ PC

Special Finishes

■ PB

■ PN

■ SN

■ ORB

■ SS

■ PCW

■ MB



20 GAUGE TRIP LEVER BATH WASTE

TD982

- 22-1/2" maximum make-up tub waste
- 1-1/2" beehive grid drain plug
- Trip lever faceplate
- Trim only finished
- Heavy duty metal construction
- 20 ga. brass tubes

PC: \$221
Special Finishes: \$244

Available Finishes:

Standard Finish

■ PC

Special Finishes

■ PB

■ PN

■ SN

■ ORB

■ SS

■ PCW

■ MB



FULLY FINISHED 17 GAUGE TRIP LEVER BATH WASTE

TD983

- 22-1/2" maximum make-up tub waste
- 1-1/2" beehive grid drain plug
- Trip lever faceplate
- All exposed style
- All parts finished
- Includes 6" tailpiece
- High box flange
- 17 ga. brass tubes

PC: \$342
Special Finishes: \$391

Available Finishes:

Standard Finish

■ PC

Special Finishes

■ PB

■ PN

■ SN

■ ORB

■ SS

■ PCW

■ MB



TIP-TOE BATH WASTE & OVERFLOW

17 GAUGE TIP-TOE BATH WASTE

TD984

- 14" maximum make-up tub waste
- 1-1/2" tip-toe drain plug
- Two-hole faceplate
- Trim only finished
- Heavy duty metal construction
- 17 ga. brass tubes

PC: \$198
Special Finishes: \$244

Available Finishes:

Standard Finish
■ PC

Special Finishes

■ PB
■ PN
■ SN
■ ORB
■ SS
■ PCW
■ MB



20 GAUGE TIP-TOE BATH WASTE

TD985

- 14" maximum make-up tub waste
- 1-1/2" tip-toe drain plug
- Two-hole faceplate
- Trim only finished
- Heavy duty metal construction
- 20 ga. brass tubes

PC: \$179
Special Finishes: \$228

Available Finishes:

Standard Finish
■ PC

Special Finishes

■ PB
■ PN
■ SN
■ ORB
■ SS
■ PCW
■ MB



FULLY FINISHED 17 GAUGE TIP-TOE BATH WASTE

TD986

- 14" maximum make-up tub waste
- 1-1/2" tip-toe drain plug
- Two-hole faceplate
- All exposed style
- All parts finished
- Includes 6" tailpiece
- High box flange
- 17 ga. brass tubes

PC: \$310
Special Finishes: \$342

Available Finishes:

Standard Finish
■ PC

Special Finishes

■ PB
■ PN
■ SN
■ ORB
■ PCW
■ MB



TIP-TOE BATH WASTE & OVERFLOW

17 GAUGE TIP-TOE BATH WASTE

TD987

- 22-1/2" maximum make-up tub waste
- 1-1/2" tip toe drain plug
- Two-hole faceplate
- Trim only finished
- Heavy duty metal construction
- 17 gauge brass tubes

PC: \$221

Special Finishes: \$254

Available Finishes:

Standard Finish

■ PC

Special Finishes

■ PB

■ PN

■ SN

■ ORB

■ SS

■ PCW

■ MB



20 GAUGE TIP-TOE BATH WASTE

TD988

- 22-1/2" maximum make-up tub waste
- 1-1/2" tip toe drain plug
- Two-hole faceplate
- Trim only finished
- Heavy duty metal construction
- 20 gauge brass tubes

PC: \$195

Special Finishes: \$244

Available Finishes:

Standard Finish

■ PC

Special Finishes

■ PB

■ PN

■ SN

■ ORB

■ SS

■ PCW

■ MB



FULLY FINISHED 17 GAUGE TIP-TOE BATH WASTE

TD989

- 22-1/2" maximum make-up tub waste
- 1-1/2" tip toe drain plug
- Two-hole faceplate
- All exposed style
- All parts finished
- Includes 6" tailpiece
- High box flange
- 17 gauge brass tubes

PC: \$326

Special Finishes: \$362

Available Finishes:

Standard Finish

■ PC

Special Finishes

■ PB

■ PN

■ SN

■ ORB

■ SS

■ PCW

■ MB



PULL & DRAIN BATH WASTE & OVERFLOW

17 GAUGE PULL & DRAIN BATH WASTE

TD990

- 14" maximum make-up tub waste
- 1-1/2" pull & drain plug
- Two-hole faceplate
- Trim only finished
- Heavy duty metal construction
- 17 gauge brass tubes

PC: \$206

Special Finishes: \$252

Available Finishes:

Standard Finish

■ PC

Special Finishes

■ PB

■ PN

■ SN

■ ORB

■ PCW

■ MB



20 GAUGE PULL & DRAIN BATH WASTE

TD991

- 14" maximum make-up tub waste
- 1-1/2" pull & drain plug
- Two-hole faceplate
- Trim only finished
- Heavy duty metal construction
- 20 gauge brass tubes

PC: \$195

Special Finishes: \$219

Available Finishes:

Standard Finish

■ PC

Special Finishes

■ PB

■ PN

■ SN

■ ORB

■ PCW

■ MB



FULLY FINISHED 17 GAUGE PULL & DRAIN BATH WASTE

TD992

- 14" maximum make-up tub waste
- 1-1/2" pull & drain plug
- Two-hole faceplate
- All exposed style
- All parts finished
- Includes 6" tailpiece
- High box flange
- 17 gauge brass tubes

PC: \$359

Special Finishes: \$362

Available Finishes:

Standard Finish

■ PC

Special Finishes

■ PBP

■ PN

■ SN

■ ORB

■ PCW

■ MB



PULL & DRAIN BATH WASTE & OVERFLOW

17 GAUGE PULL & DRAIN BATH WASTE

TD993

- 22-1/2" maximum make-up tub waste
- 1-1/2" pull & drain plug
- Two-hole faceplate
- Trim only finished
- Heavy duty metal construction
- 17 gauge brass tubes

PC: \$229
Special Finishes: \$262

Available Finishes:

Standard Finish
■ PC

Special Finishes

■ PB
■ PN
■ SN
■ ORB
■ PCW
■ MB



20 GAUGE PULL & DRAIN BATH WASTE

TD994

- 22-1/2" maximum make-up tub waste
- 1-1/2" pull & drain plug
- Two-hole faceplate
- Trim only finished
- Heavy duty metal construction
- 20 gauge brass tubes

PC: \$197
Special Finishes: \$252

Available Finishes:

Standard Finish
■ PC

Special Finishes

■ PB
■ PN
■ SN
■ ORB
■ PCW
■ MB



FULLY FINISHED 17 GAUGE PULL & DRAIN BATH WASTE

TD995

- 22-1/2" maximum make-up tub waste
- 1-1/2" pull & drain plug
- Two-hole faceplate
- All exposed style
- All parts finished
- Includes 6" tailpiece
- High box flange
- 17 gauge brass tubes

PC \$375
Special Finishes: \$395

Available Finishes:

Standard Finish
■ PC

Special Finishes

■ PB
■ PN
■ SN
■ ORB
■ PCW
■ MB



BLACK TUBULAR BATH WASTE & OVERFLOW

1-1/2" BLACK TUBULAR TRIP LEVER BW&O

TD996

- 1-1/2" coarse beehive drain plug
- Trip lever faceplate with screws
- Black poly tubes with poly slip joint washers
- Heavy duty metal trim

PC: \$67
Special Finishes: \$106

Available Finishes:

Standard Finish

■ PC

Special Finishes

■ PBP

■ PN

■ SN

■ ORB

■ SS

■ PCW

■ MB



1-1/2" BLACK TUBULAR TIP-TOE BW&O

TD997

- 1-1/2" tip toe drain plug
- 2-hole faceplate with screws
- Black poly tubes with poly slip joint washers
- Heavy duty metal trim

PC: \$67
Special Finishes: \$106

Available Finishes:

Standard Finish

■ PC

Special Finishes

■ PBP

■ PN

■ SN

■ ORB

■ SS

■ PCW

■ MB



1-1/2" BLACK TUBULAR TWIST & CLOSE BW&O

TD998

- 1-1/2" twist & close drain plug
- 2-hole faceplate with screws
- Black poly tubes with poly slip joint washers
- Heavy duty metal trim

PC: \$67
Special Finishes: \$106

Available Finishes:

Standard Finish

■ PC

Special Finishes

■ PBP

■ PN

■ SN

■ ORB

■ SS

■ PCW

■ MB



1-1/2" BLACK TUBULAR PULL & DRAIN BW&O

TD999

- 1-1/2" pull & drain plug
- 2-hole faceplate with screws
- Black poly tubes with poly slip joint washers
- Heavy duty metal trim

PC: \$67
Special Finishes: \$106

Available Finishes:

Standard Finish

■ PC

Special Finishes

■ PBP

■ PN

■ SN

■ ORB

■ SS

■ PCW

■ MB



1-1/2" BLACK BATH WASTE EXTENSION TUBE

TDEXT-A

- 1-1/2" poly slip joint tube
- Extends top tube length
- With poly slip joint washer and nut

Price: \$11



WHITE TUBULAR BATH WASTE & OVERFLOW

1-1/2" WHITE TUBULAR TRIP LEVER BW&O

TD9001

- 1-1/2" coarse beehive drain plug
- Trip lever faceplate with screws
- White poly tubes with poly slip joint washers
- Heavy duty metal trim

PC: \$67
Special Finishes: \$106

Available Finishes:

Standard Finish
■ PC

Special Finishes

■ PBP
■ PN
■ SN
■ SS
■ PCW
■ ORB
■ MB



1-1/2" WHITE TUBULAR TIP-TOE BW&O

TD9002

- 1-1/2" tip toe drain plug
- 2-hole faceplate with screws
- White poly tubes with poly slip joint washers
- Heavy duty metal trim

PC: \$67
Special Finishes: \$106

Available Finishes:

Standard Finish
■ PC

Special Finishes

■ PBP
■ PN
■ SN
■ SS
■ PCW
■ ORB
■ MB



1-1/2" WHITE TUBULAR TWIST & CLOSE BW&O

TD9003

- 1-1/2" twist & close drain plug
- 2-hole faceplate with screws
- White poly tubes with poly slip joint washers
- Heavy duty metal trim

PC: \$67
Special Finishes: \$106

Available Finishes:

Standard Finish
■ PC

Special Finishes

■ PBP
■ PN
■ SN
■ SS
■ PCW
■ ORB
■ MB



1-1/2" WHITE TUBULAR PULL & DRAIN BW&O

TD9004

- 1-1/2" pull & drain drain plug
- 2-hole faceplate with screws
- White poly tubes with poly slip joint washers
- Heavy duty metal trim

PC: \$67
Special Finishes: \$106

Available Finishes:

Standard Finish
■ PC

Special Finishes

■ PBP
■ PN
■ SN
■ SS
■ PCW
■ ORB
■ MB



1-1/2" WHITE BATH WASTE EXTENSION TUBE

TDEXT-P

- 1-1/2" poly slip joint tube
- Extends top tube length
- With poly slip joint washer and nut

Price: \$11



ABS BATH WASTE & OVERFLOW

1-1/2" SCH. 40 ABS TIP-TOE BW&O

TD9005

- 1-1/2" tip toe drain plug
- 1-hole faceplate with screw
- 12" x 4" ABS tubes, elbow, tee, and shoe
- Heavy duty metal trim

PC: \$67
Special Finishes: \$106

Available Finishes:

- Standard Finish
■ PC
- Special Finishes
■ PBP
■ PN
■ SN
■ ORB
■ SS
■ PCW
■ MB



1-1/2" SCH. 40 ABS TIP-TOE BW&O

TD9006

- 1-1/2" tip toe drain plug
- 2-hole faceplate with screws
- 12" x 4" ABS tubes, elbow, tee, and shoe
- Heavy duty metal trim

PC: \$67
Special Finishes: \$106

Available Finishes:

- Standard Finish
■ PC
- Special Finishes
■ PBP
■ PN
■ SN
■ ORB
■ SS
■ PCW
■ MB



1-1/2" SCH. 40 ABS TWIST & CLOSE BW&O

TD9007

- 1-1/2" twist & close drain plug
- 1-hole faceplate with screw
- 12" x 4" ABS tubes, elbow, tee, and shoe
- Heavy duty metal trim

PC: \$67
Special Finishes: \$106

Available Finishes:

- Standard Finish
■ PC
- Special Finishes
■ PBP
■ PN
■ SN
■ ORB
■ SS
■ PCW
■ MB



1-1/2" SCH. 40 ABS TWIST & CLOSE BW&O

TD9008

- 1-1/2" twist & close drain plug
- 2-hole faceplate with screws
- 12" x 4" ABS tubes, elbow, tee, and shoe
- Heavy duty metal trim

PC: \$67
Special Finishes: \$106

Available Finishes:

- Standard Finish
■ PC
- Special Finishes
■ PBP
■ PN
■ SN
■ ORB
■ SS
■ PCW
■ MB



1-1/2" SCH. 40 ABS PULL & DRAIN BW&O

TD9009

- 1-1/2" pull & drain plug
- 1-hole faceplate with screws
- 12" x 4" ABS tubes, elbow, tee, and shoe
- Heavy duty metal trim

PC: \$67
Special Finishes: \$106

Available Finishes:

- Standard Finish
■ PC
- Special Finishes
■ PBP
■ PN
■ SN
■ ORB
■ SS
■ PCW
■ MB



1-1/2" SCH. 40 ABS PULL & DRAIN BW&O

TD9010

- 1-1/2" pull & drain plug
- 2-hole faceplate with screws
- 12" x 4" ABS tubes, elbow, tee, and shoe
- Heavy duty metal trim

PC: \$67
Special Finishes: \$106

Available Finishes:

- Standard Finish
■ PC
- Special Finishes
■ PBP
■ PN
■ SN
■ ORB
■ SS
■ PCW
■ MB



PVC BATH WASTE & OVERFLOW

1-1/2" SCH. 40 PVC TIP-TOE BW&O

TD9011

- 1-1/2" tip toe drain plug
- 1-hole faceplate with screw
- 12" x 4" PVC tubes, elbow, tee, and shoe
- Heavy duty metal trim

PC: \$67
Special Finishes: \$106

Available Finishes:

Standard Finish

■ PC

Special Finishes

■ PBP

■ PN

■ SN

■ ORB

■ SS

■ PCW

■ MB



1-1/2" SCH. 40 PVC TIP-TOE BW&O

TD9012

- 1-1/2" tip toe drain plug
- 2-hole faceplate with screws
- 12" x 4" PVC tubes, elbow, tee, and shoe
- Heavy duty metal trim

PC: \$67
Special Finishes: \$106

Available Finishes:

Standard Finish

■ PC

Special Finishes

■ PBP

■ PN

■ SN

■ ORB

■ SS

■ PCW

■ MB



1-1/2" SCH. 40 PVC TWIST & CLOSE BW&O

TD9013

- 1-1/2" tip toe drain plug
- 1-hole faceplate with screws
- 12" x 4" PVC tubes, elbow, tee, and shoe
- Heavy duty metal trim

PC: \$67
Special Finishes: \$106

Available Finishes:

Standard Finish

■ PC

Special Finishes

■ PBP

■ PN

■ SN

■ ORB

■ SS

■ PCW

■ MB



1-1/2" SCH. 40 PVC TWIST & CLOSE BW&O

TD9014

- 1-1/2" tip toe drain plug
- 2-hole faceplate with screws
- 12" x 4" PVC tubes, elbow, tee, and shoe
- Heavy duty metal trim

PC: \$67
Special Finishes: \$106

Available Finishes:

Standard Finish

■ PC

Special Finishes

■ PBP

■ PN

■ SN

■ ORB

■ SS

■ PCW

■ MB



1-1/2" SCH. 40 PVC PULL & DRAIN BW&O

TD9015

- 1-1/2" tip toe drain plug
- 1-hole faceplate with screws
- 12" x 4" PVC tubes, elbow, tee, and shoe
- Heavy duty metal trim

PC: \$67
Special Finishes: \$106

Available Finishes:

Standard Finish

■ PC

Special Finishes

■ PBP

■ PN

■ SN

■ ORB

■ SS

■ PCW

■ MB



1-1/2" SCH. 40 PVC PULL & DRAIN BW&O

TD9016

- 1-1/2" tip toe drain plug
- 2-hole faceplate with screws
- 12" x 4" PVC tubes, elbow, tee, and shoe
- Heavy duty metal trim

PC: \$67
Special Finishes: \$106

Available Finishes:

Standard Finish

■ PC

Special Finishes

■ PBP

■ PN

■ SN

■ ORB

■ SS

■ PCW

■ MB



BATH WASTE & OVERFLOW TRIM KITS

TIP TOE UNIVERSAL TRIM SET, 1-HOLE

TDK9020

- One-hole faceplate
- Tip toe mechanism
- 1-3/8"-16 fine thread strainer
- 1-1/2" x 1-3/8" adapter bushing & converter bracket included
- Heavy duty metal trim

PC: \$70
Special Finishes: \$103

Available Finishes:

- Standard Finish
■ PC
- Special Finishes
■ PBP
■ PN
■ SN
■ ORB
■ PCW
■ MB



TIP TOE UNIVERSAL TRIM SET, 2-HOLE

TDK9021

- Two-hole faceplate
- Tip toe mechanism
- 1-3/8"-16 fine thread strainer
- 1-1/2" x 1-3/8" adapter bushing included
- Heavy duty metal trim

PC: \$75
Special Finishes: \$108

Available Finishes:

- Standard Finish
■ PC
- Special Finishes
■ PBP
■ PN
■ SN
■ ORB
■ PCW
■ MB



ILLUSIONARY TIP-TOE UNIVERSAL TRIM SET

TDK9022

- No-hole faceplate
- ADA approved Tip-toe mechanism
- 1-3/8"-16 fine thread strainer exterior with adapter busing
- 1-1/2" x 1-3/8" adapter bushing included
- Heavy duty metal trim

PC: \$128
Special Finishes: \$144

Available Finishes:

- Standard Finish
■ PC
- Special Finishes
■ PBP
■ PN
■ SN
■ ORB
■ MB



TWIST & CLOSE UNIVERSAL TRIM SET, 1-HOLE

TDK9023

- One-hole faceplate
- Twist & close mechanism
- 1-3/8"-16 fine thread strainer
- 1-1/2" x 1-3/8" adapter bushing and converter bracket included
- Heavy duty metal trim

PC: \$70
Special Finishes: \$103

Available Finishes:

- Standard Finish
■ PC
- Special Finishes
■ PBP
■ PN
■ SN
■ ORB
■ PCW
■ MB



TWIST & CLOSE UNIVERSAL TRIM SET, 2-HOLE

TDK9024

- Two-hole faceplate
- Twist & close mechanism
- 1-3/8"-16 fine thread strainer
- 1-1/2" x 1-3/8" adapter bushing included
- Heavy duty metal trim

PC: \$75
Special Finishes: \$108

Available Finishes:

- Standard Finish
■ PC
- Special Finishes
■ PBP
■ PN
■ SN
■ ORB
■ PCW
■ MB



TWIST & CLOSE UNIVERSAL TRIM SET, HIDDEN

TDK9025

- No-hole faceplate
- Twist & close mechanism
- 1-3/8"-16 fine thread strainer exterior with adapter busing
- 1-1/2" x 1-3/8" adapter bushing included
- Heavy duty metal trim

PC: \$106
Special Finishes: \$139

Available Finishes:

- Standard Finish
■ PC
- Special Finishes
■ PBP
■ PN
■ SN
■ ORB
■ PCW
■ MB



BATH WASTE & OVERFLOW TRIM KITS

TIP TOE TRIM SET WITH COARSE THREAD STRAINER

TD9026

- One-hole faceplate
- Tip toe mechanism
- Coarse thread
- 1-1/2" NPSM (1-7/8" - 11-1/2 UNC) exterior
- Heavy duty metal construction

PC: \$69
Special Finishes: \$98

Available Finishes:

- Standard Finish
■ PC
- Special Finishes
■ PBP
■ PN
■ SN
■ ORB
■ PCW
■ MB



TIP TOE TRIM SET WITH COARSE THREAD STRAINER

TD9027

- Two-hole faceplate
- Tip toe mechanism
- Coarse thread
- 1-1/2" NPSM (1-7/8" - 11-1/2 UNC) exterior
- Heavy duty metal construction

PC: \$74
Special Finishes: \$106

Available Finishes:

- Standard Finish
■ PC
- Special Finishes
■ PBP
■ PN
■ SN
■ ORB
■ PCW
■ MB



ROUND MUSHROOM TIP TOE TRIM SET

TD9028

- No-hole round faceplate
- Round mushroom tip toe drain
- Coarse thread
- 1-1/2" NPSM (1-7/8" - 11-1/2 UNC) exterior
- Heavy duty metal construction

PC: \$123
Special Finishes: \$147

Available Finishes:

- Standard Finish
■ PC
- Special Finishes
■ PBP
■ PN
■ SN
■ ORB
■ SS
■ PCW
■ MB



TWIST & CLOSE TRIM SET WITH COARSE THREAD STRAINER

TD9029

- One-hole faceplate
- Twist & close mechanism
- Coarse thread
- 1-1/2" NPSM (1-7/8" - 11-1/2 UNC) exterior
- Heavy duty metal construction

PC: \$67
Special Finishes: \$100

Available Finishes:

- Standard Finish
■ PC
- Special Finishes
■ PBP
■ PN
■ SN
■ ORB
■ PCW
■ MB



TWIST & CLOSE TRIM SET WITH COARSE THREAD STRAINER

TD9030

- Two-hole faceplate
- Twist & close mechanism
- Coarse thread
- 1-1/2" NPSM (1-7/8" - 11-1/2 UNC) exterior
- Heavy duty metal construction

PC: \$70
Special Finishes: \$111

Available Finishes:

- Standard Finish
■ PC
- Special Finishes
■ PBP
■ PN
■ SN
■ ORB
■ PCW
■ MB



TWIST & CLOSE TRIM SET WITH HIDDEN OVERFLOW

TD9031

- No-hole faceplate
- Twist & close mechanism
- Coarse thread
- 1-1/2" NPSM (1-7/8" - 11-1/2 UNC) exterior
- Heavy duty metal construction

PC: \$98
Special Finishes: \$131

Available Finishes:

- Standard Finish
■ PC
- Special Finishes
■ PBP
■ PN
■ SN
■ ORB
■ PCW
■ MB



BATH TUB STRAINERS

TRIP LEVER TRIM SET WITH BEEHIVE GRID

TD9032

- Trip lever
- Beehive grid drain
- Plated brass screws
- Heavy duty metal construction

PC: \$56
Special Finishes: \$79

Available Finishes:

Standard Finish

■ PC

Special Finishes

■ PBP

■ PN

■ SN

■ AC

■ ORB

■ SS

■ PCW

■ MB



TRIP LEVER UNIVERSAL TRIM SET

TD9033

- Trip lever faceplate
- Shoe strainer with grid and screw
- 1-3/8"-16 fine thread strainer
- 1-1/2" x 1-3/8" adapter bushing
- Heavy duty metal construction

PC: \$75
Special Finishes: \$105

Available Finishes:

Standard Finish

■ PC

Special Finishes

■ PBP

■ PN

■ SN

■ AC

■ ORB

■ SS

■ PCW

■ MB



1-1/2" BATH DRAIN WITH GRID & SCREW

TD9034

- 1-1/2" beehive strainer style bath drain
- Coarse thread
- 1-1/2" NPSM (1-7/8" - 11-1/2 UNC) exterior
- #10 - 24 x 1-5/8" oval head brass screw
- Heavy duty metal construction

PC: \$56
Special Finishes: \$88

Available Finishes:

Standard Finish

■ PC

Special Finishes

■ PBP

■ PN

■ SN

■ ORB

■ SS

■ PCW

■ MB



1-3/8" BATH DRAIN WITH GRID & SCREW

TD9035

- 1-3/8" beehive strainer style bath drain
- Fine thread
- 1-3/8" NPSM (1-5/8" - 16 UNC) exterior
- #10 - 24 x 1-5/8" oval head brass screw
- Heavy duty metal construction

PC: \$56
Special Finishes: \$88

Available Finishes:

Standard Finish

■ PC

Special Finishes

■ PBP

■ PN

■ SN

■ ORB

■ SS

■ PCW

■ MB



1-1/2" TWIST & CLOSE BATH DRAIN

TD9036

- 1-1/2" twist & close style bath drain
- Coarse thread
- 1-1/2" NPSM (1-7/8" - 11-1/2 UNC) exterior
- Heavy duty metal construction

PC: \$56
Special Finishes: \$88

Available Finishes:

Standard Finish

■ PC

Special Finishes

■ PBP

■ PN

■ SN

■ ORB

■ SS

■ PCW

■ MB



1-3/8" TWIST & CLOSE BATH DRAIN

TD9037

- 1-3/8" twist & close style bath drain
- Fine thread
- 1-3/8" NPSM (1-5/8" - 16 UNC) exterior
- Heavy duty metal construction

PC: \$56
Special Finishes: \$88

Available Finishes:

Standard Finish

■ PC

Special Finishes

■ PBP

■ PN

■ SN

■ ORB

■ SS

■ PCW

■ MB



BATH TUB STRAINERS

1-1/2" ROUND MUSHROOM TIP-TOE BATH DRAIN

TD9038 1-1/2" NPSM (1-7/8" - 11-1/2 UNC)

TD9039 1-1/4" NPSM (1-5/8" - 16 UNC)

- Tip-Toe style bath drain
- European style full cover mushroom cap
- Sizes as marked above

PC: \$74

Special Finishes: \$106

Available Finishes:

Standard Finish

■ PC

Special Finishes

■ PBP

■ PN

■ SN

■ ORB

■ PCW

■ MB



1-1/2" TIP-TOE BATH DRAIN

TD9040

- 1-1/2" tip-toe style bath drain
- Coarse thread
- 1-1/2" NPSM (1-7/8" - 11-1/2 UNC) exterior
- Heavy duty metal construction

PC: \$56

Special Finishes: \$88

Available Finishes:

Standard Finish

■ PC

Special Finishes

■ PBP

■ PN

■ SN

■ ORB

■ PCW

■ MB



1-3/8" TIP-TOE BATH DRAIN

TD9041

- 1-3/8" tip-toe style bath drain
- Fine thread
- 1-3/8" NPSM (1-5/8" - 16 UNC) exterior
- Heavy duty metal construction

PC: \$56

Special Finishes: \$88

Available Finishes:

Standard Finish

■ PC

Special Finishes

■ PBP

■ PN

■ SN

■ ORB

■ PCW

■ MB



TIP-TOE PLUNGER ONLY

TT38 (3/8 Thread) -OR- TT516 (5/16 Thread)

- Replacement plunger
- Less Cap

Special Finish: \$16



TIP-TOE PLUNGER AND PLASTIC CUP

TTPP

- Replacement plunger
- With Plastic Cap

PC: \$23

Special Finishes: \$30

Available Finishes:

Standard Finish

■ PC

Special Finishes

■ PBP

■ SN



BRASS ADAPTER WITH D98 BRASS COVER

TTBP

- Replacement Plunger and Cover
- Brass stopper with 3/8 in. tapping

PC: \$71

Special Finishes: \$72

Available Finishes:

Standard Finish

■ PC

Special Finishes

■ PBP

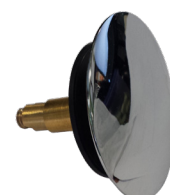
■ PN

■ SN

■ ORB

■ PCW

■ MB



BATH WASTE & OVERFLOW TRIM KITS

ONE-HOLE FACEPLATE WITH SCREW

TD9042

- One-hole overflow faceplate
- 1/4" - 20 brass screw included
- Heavy duty metal construction

PC: \$10
Special Finishes: \$31

Available Finishes:

Standard Finish
■ PC

Special Finishes

■ PBP
■ PN
■ SN
■ ORB
■ SS
■ PCW
■ MB



TWO-HOLE FACEPLATE WITH SCREWS

TD9043

- Two-hole overflow faceplate
- Two 1/4" - 20 brass screws included
- Heavy duty metal construction

PC: \$20
Special Finishes: \$39

Available Finishes:

Standard Finish
■ PC

Special Finishes

■ PBP
■ PN
■ SN
■ ORB
■ SS
■ PCW
■ MB



TRIP LEVER FACEPLATE WITH SCREWS

TD9044

- Trip lever overflow faceplate
- Two 1/4" - 20 brass screws included
- Heavy duty metal construction

PC: \$36
Special Finishes: \$56

Available Finishes:

Standard Finish
■ PC

Special Finishes

■ PBP
■ PN
■ SN
■ ORB
■ SS
■ PCW
■ MB



ROUND FLOATING FACEPLATE

TD9045

- No-hole round overflow faceplate
- Adapter fits integrated overflow tubs
- Fits two hole top elbow overflows
- Two screws and mounting ring included
- Solid brass

PC: \$74
Special Finishes: \$97

Available Finishes:

Standard Finish
■ PC

Special Finishes

■ PBP
■ PN
■ SN
■ ORB
■ SS
■ PCW
■ MB



BEEHIVE STYLE TUB WITH SCREW

TD9046

- Gerberz style tub waste grid
- #10 - 24 x 1-5/8" oval head brass screw
- Heavy duty metal construction

PC: \$20
Special Finishes: \$39

Available Finishes:

Standard Finish
■ PC

Special Finishes

■ PBP
■ PN
■ SN
■ ORB
■ SS
■ PCW
■ MB



BATH WASTE & OVERFLOW TRIM KITS

STRAIGHT ADAPTER - 1-1/2"

TSADAPTER-P (PVC) -OR- TSADAPTER-A (ABS)

- 1-1/2" NPSM (1-7/8" - 11.5 UNC-2B)
- Attaches integrated drain to plumbing
- Sch 40. Pipe Fitting

Price: \$13



CLOSING NO HOLE OVERFLOW

PATENTED CLOSING METALLIC OVERFLOW COVER

TS9047

- Fits 2-hole overflow faceplate
- Replaces traditional overflow cover
- Heavy metallic construction
- Easily installs using a screwdriver

PC: \$49

Special Finishes: \$82

Available Finishes:

Standard Finish

■ PC

Special Finishes

■ PN

■ SN

■ PCW

■ ORB

■ MB



CLOSING METALLIC OVERFLOW COVER PLUMBER'S PACK

TD9048

- Fits 2-hole overflow faceplate
- Replaces traditional overflow cover
- Heavy metallic construction
- Oversized tip-toe coverplate
- ADA approved drain
- Tee included
- Solvent weld using primer & PVC cement

PC: \$110

Special Finishes: \$139

Available Finishes:

Standard Finish

■ PC

Special Finishes

■ PN

■ SN

■ PCW

■ ORB

■ MB



ILLUSIONARY OVERFLOW PLUMBER'S PACKS

ILLUSIONARY OVERFLOW ABS PLUMBER'S PACK

TD9049PP

- Fits 2-hole overflow faceplate
- Replaces traditional overflow cover
- Heavy metallic construction
- Oversized tip-toe coverplate
- ADA approved drain
- Tee included
- Solvent weld using primer & ABS cement

PC: \$110

Special Finishes: \$139

Available Finishes:

Standard Finish

■ PC

Special Finishes

■ PBP

■ PB

■ PN

■ SN

■ PCW

■ ORB

■ MB



ILLUSIONARY OVERFLOW PVC PLUMBER'S PACK

TD9050PP

- Fits 2-hole overflow faceplate
- Replaces traditional overflow cover
- Heavy metallic construction
- Oversized tip-toe coverplate
- ADA approved drain
- Tee included
- Solvent weld using primer & PVC cement

PC: \$110

Special Finishes: \$139

Available Finishes:

Standard Finish

■ PC

Special Finishes

■ PBP

■ PB

■ PN

■ SN

■ PCW

■ ORB

■ MB



ILLUSIONARY OVERFLOW ABS PLUMBER'S PACK

TD9051PP

- Fits 2-hole overflow faceplate
- Replaces traditional overflow cover
- Heavy metallic construction
- Pull & Drain tub seal
- Tee included
- Solvent weld using primer & ABS cement

PC: \$110

Special Finishes: \$139

Available Finishes:

Standard Finish

■ PC

Special Finishes

■ PBP

■ PB

■ PN

■ SN

■ PCW

■ ORB

■ MB



ILLUSIONARY OVERFLOW PVC PLUMBER'S PACK

TD9052PP

- Fits 2-hole overflow faceplate
- Replaces traditional overflow cover
- Heavy metallic construction
- Pull & Drain tub seal
- Tee included
- Solvent weld using primer & PVC cement

PC: \$110

Special Finishes: \$139

Available Finishes:

Standard Finish

■ PC

Special Finishes

■ PBP

■ PB

■ PN

■ SN

■ PCW

■ ORB

■ MB



PVC & ABS PLUMBER'S PACKS

1-1/2" SCH. 40 PVC TIP TOE PLUMBER'S PACK

TD9053PP

- 1-1/2" tip toe style drain
- Two-hole faceplate
- PVC top elbow and shoe elbow included
- Heavy duty metal construction
- Tubing & tee not included

PC: \$64
Special Finishes: \$97

Available Finishes:

Standard Finish

■ PC

Special Finishes

■ PBP

■ PN

■ SN

■ ORB

■ SS

■ PCW

■ MB



1-1/2" SCH. 40 ABS TIP TOE PLUMBER'S PACK

TD9054PP

- 1-1/2" tip toe style drain
- Two-hole faceplate
- ABS top elbow and shoe elbow included
- Heavy duty metal construction
- Tubing & tee not included

PC: \$64
Special Finishes: \$97

Available Finishes:

Standard Finish

■ PC

Special Finishes

■ PBP

■ PN

■ SN

■ ORB

■ SS

■ PCW

■ MB



1-1/2" SCH. 40 PVC TWIST & CLOSE PLUMBER'S PACK

TD9054PP-PVC

- 1-1/2" twist & close style drain
- Two-hole faceplate
- PVC top elbow and shoe elbow included
- Heavy duty metal construction
- Tubing & tee not included

PC: \$64
Special Finishes: \$97

Available Finishes:

Standard Finish

■ PC

Special Finishes

■ PBP

■ PN

■ SN

■ ORB

■ SS

■ PCW

■ MB



1-1/2" SCH. 40 ABS TWIST & CLOSE PLUMBER'S PACK

TD9055PP

- 1-1/2" twist & close style drain
- Two-hole faceplate
- ABS top elbow and shoe elbow included
- Heavy duty metal construction
- Tubing & tee not included

PC: \$64
Special Finishes: \$97

Available Finishes:

Standard Finish

■ PC

Special Finishes

■ PBP

■ PN

■ SN

■ ORB

■ SS

■ PCW

■ MB



1-1/2" SCH. 40 PVC PULL & DRAIN PLUMBER'S PACK

TD9056PP

- 1-1/2" pull & drain style drain
- Two-hole faceplate
- PVC top elbow and shoe elbow included
- Heavy duty metal construction
- Tubing & tee not included

PC: \$64
Special Finishes: \$97

Available Finishes:

Standard Finish

■ PC

Special Finishes

■ PBP

■ PN

■ SN

■ ORB

■ SS

■ PCW

■ MB



1-1/2" SCH. 40 ABS PULL & DRAIN PLUMBER'S PACK

TD9057PP

- 1-1/2" pull & drain style drain
- Two-hole faceplate
- ABS top elbow and shoe elbow included
- Heavy duty metal construction
- Tubing & tee not included

PC: \$64
Special Finishes: \$97

Available Finishes:

Standard Finish

■ PC

Special Finishes

■ PBP

■ PN

■ SN

■ ORB

■ SS

■ PCW

■ MB



BRASS ADAPTER BUSHING

TDBB

- Converts 1-3/8" fine to 1-1/2" coarse thread
- 1-7/8" - 11-1/2 x 1-5/8" - 16 adapter bushing

Special Finish: \$20



LONG BRASS ADAPTER BUSHING

TDBBL

- Converts 1-3/8" fine to 1-1/2" coarse thread
- 1-7/8" - 11-1/2 x 1-5/8" - 16 adapter bushing
- 2 in. long bushing

Special Finish: \$34



LONG BRASS ADAPTER BUSHING

TDBBEL

- Converts 1-3/8" fine to 1-1/2" coarse thread
- 1-7/8" - 11-1/2 x 1-5/8" - 16 adapter bushing
- 4 in. long bushing

Special Finish: \$97

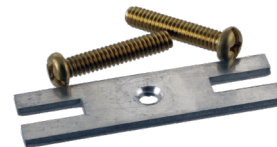


TOP ELBOW CONVERTER BRACKET

TDCB

- Converts two hole elbow for 1-hole faceplates

Special Finish: \$11



BRASS HALF FERRULE

TDHF

- Brass compression ferrule
- Can be soldered for commercial applications
- Can be used in all brass tube kits

Special Finish: \$11



ABS CABLE DRIVEN BATH WASTE & OVERFLOWS

1-1/2" SCH. 40 ABS CABLE DRIVEN BW&O

TD9058

- 1-1/2" schedule 40 ABS cable driven bath waste
- 27" cable - trim includes brass handle, back plate, pop-up, and strainer plate
- All glue type - tubes not included

PC: \$226
 Special Finishes: \$288
 (Less Trim): \$98

Available Finishes:

- Standard Finish
 ■ PC
- Special Finishes
 ■ PBP
 ■ PN
 ■ SN
 ■ ORB
 ■ SS
 ■ PCW
 ■ MB



1-1/2" SCH. 40 ABS BALL JOINT CABLE DRIVEN BW&O

TD9059

- 1-1/2" schedule 40 ABS cable driven bath waste
- 27" cable - trim includes brass handle, back plate, pop-up, and strainer plate
- All glue type - tubes not included

PC: \$234
 Special Finishes: \$298
 (Less Trim): \$111

Available Finishes:

- Standard Finish
 ■ PC
- Special Finishes
 ■ PBP
 ■ PN
 ■ SN
 ■ ORB
 ■ SS
 ■ PCW
 ■ MB



1-1/2" SCH. 40 ABS CABLE DRIVEN BW&O

TD9060

- 1-1/2" schedule 40 ABS cable driven bath waste
- 35" cable - trim includes brass handle, back plate, pop-up, and strainer plate
- All glue type - tubes not included

PC: \$236
 Special Finishes: \$298
 (Less Trim): \$111

Available Finishes:

- Standard Finish
 ■ PC
- Special Finishes
 ■ PBP
 ■ PN
 ■ SN
 ■ ORB
 ■ SS
 ■ PCW
 ■ MB



1-1/2" SCH. 40 ABS BALL JOINT CABLE DRIVEN BW&O

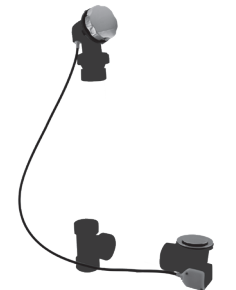
TD9061

- 1-1/2" schedule 40 ABS cable driven bath waste
- 35" cable - trim includes brass handle, back plate, pop-up, and strainer plate
- All glue type - tubes not included

PC: \$244
 Special Finishes: \$308
 D50A35BJ-LT (Less Trim): \$121

Available Finishes:

- Standard Finish
 ■ PC
- Special Finishes
 ■ PBP
 ■ PN
 ■ SN
 ■ ORB
 ■ SS
 ■ PCW
 ■ MB



1-1/2" SCH. 40 ABS CABLE DRIVEN BW&O

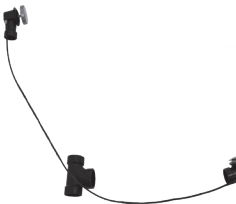
TD9062

- 1-1/2" schedule 40 ABS cable driven bath waste
- 45" cable - trim includes brass handle, back plate, pop-up, and strainer plate
- All glue type - tubes not included

PC: \$244
 Special Finishes: \$308
 (Less Trim): \$121

Available Finishes:

- Standard Finish
 ■ PC
- Special Finishes
 ■ PBP
 ■ PN
 ■ SN
 ■ ORB
 ■ SS
 ■ PCW
 ■ MB



1-1/2" SCH. 40 ABS BALL JOINT CABLE DRIVEN BW&O

TD9063

- 1-1/2" slip joint tubular cable driven bath waste
- 27" cable - slip joint adjustability
- Trim includes brass handle, back plate, large stopper, and strainer plate

PC: \$255
 Special Finishes: \$318
 (Less Trim): \$129

Available Finishes:

- Standard Finish
 ■ PC
- Special Finishes
 ■ PBP
 ■ PN
 ■ SN
 ■ ORB
 ■ SS
 ■ PCW
 ■ MB



PVC CABLE DRIVEN BATH WASTE & OVERFLOWS

1-1/2" SCH. 40 PVC CABLE DRIVEN BW&O

TD9064

- 1-1/2" schedule 40 PVC cable driven bath waste
- 27" cable - trim includes brass handle, back plate, pop-up, and strainer plate
- All glue type - tubes not included

PC: \$226
 Special Finishes: \$288
 (Less Trim): \$103

Available Finishes:

- Standard Finish
 ■ PC
- Special Finishes
 ■ PB
 ■ PN
 ■ SN
 ■ ORB
 ■ SS
 ■ PCW
 ■ MB



1-1/2" SCH. 40 PVC BALL JOINT CABLE DRIVEN BW&O

TD9065

- 1-1/2" schedule 40 PVC cable driven bath waste
- 27" cable - trim includes brass handle, back plate, pop-up, and strainer plate
- All glue type - tubes not included

PC: \$234
 Special Finishes: \$298
 (Less Trim): \$111

Available Finishes:

- Standard Finish
 ■ PC
- Special Finishes
 ■ PB
 ■ PN
 ■ SN
 ■ ORB
 ■ SS
 ■ PCW
 ■ MB



1-1/2" SCH. 40 PVC CABLE DRIVEN BW&O

TD9066

- 1-1/2" schedule 40 PVC cable driven bath waste
- 35" cable - trim includes brass handle, back plate, pop-up, and strainer plate
- All glue type - tubes not included

PC: \$236
 Special Finishes: \$298
 (Less Trim): \$111

Available Finishes:

- Standard Finish
 ■ PC
- Special Finishes
 ■ PB
 ■ PN
 ■ SN
 ■ ORB
 ■ SS
 ■ PCW
 ■ MB



1-1/2" SCH. 40 PVC BALL JOINT CABLE DRIVEN BW&O

TD9067

- 1-1/2" schedule 40 ABS cable driven bath waste
- 35" cable - trim includes brass handle, back plate, pop-up, and strainer plate
- All glue type - tubes not included

PC: \$244
 Special Finishes: \$308
 (Less Trim): \$121

Available Finishes:

- Standard Finish
 ■ PC
- Special Finishes
 ■ PB
 ■ PN
 ■ SN
 ■ ORB
 ■ SS
 ■ PCW
 ■ MB



1-1/2" SCH. 40 PVC CABLE DRIVEN BW&O

TD9068

- 1-1/2" schedule 40 PVC cable driven bath waste
- 45" cable - trim includes brass handle, back plate, pop-up, and strainer plate
- All glue type - tubes not included

PC: \$244
 Special Finishes: \$308
 (Less Trim): \$121

Available Finishes:

- Standard Finish
 ■ PC
- Special Finishes
 ■ PB
 ■ PN
 ■ SN
 ■ ORB
 ■ SS
 ■ PCW
 ■ MB



1-1/2" SCH. 40 ABS PVC JOINT CABLE DRIVEN BW&O

TD9069

- 1-1/2" schedule 40 PVC cable driven bath waste
- 45" cable - trim includes brass handle, back plate, pop-up, and strainer plate
- All glue type - tubes not included

PC: \$255
 Special Finishes: \$318
 (Less Trim): \$129

Available Finishes:

- Standard Finish
 ■ PC
- Special Finishes
 ■ PB
 ■ PN
 ■ SN
 ■ ORB
 ■ SS
 ■ PCW
 ■ MB



POLY - CABLE DRIVEN BATH WASTE & OVERFLOWS

TUBULAR CABLE DRIVE BW&O

TD9070

- 1-1/2" slip joint tubular cable driven bath waste
- 27" cable - slip joint adjustability
- Trim includes brass handle, back plate, large stopper, and strainer plate

PC: \$236
 Special Finishes: \$301
 (Less Trim): \$128

Available Finishes:

- Standard Finish
 ■ PC
- Special Finishes
 ■ PB
 ■ PN
 ■ SN
 ■ ORB
 ■ SS
 ■ PCW
 ■ MB



TUBULAR CABLE DRIVE BW&O

TD9071

- 1-1/2" slip joint tubular cable driven bath waste
- 35" cable - slip joint adjustability
- Trim includes brass handle, back plate, large stopper, and strainer plate

PC: \$244
 Special Finishes: \$308
 (Less Trim): \$128

Available Finishes:

- Standard Finish
 ■ PC
- Special Finishes
 ■ PB
 ■ PN
 ■ SN
 ■ ORB
 ■ SS
 ■ PCW
 ■ MB



EUROPEAN TRIM FOR CABLE DRIVE BW&O

TD9072-T

- Trim kit for European cable driven bath waste
- Cable, tubes, and rough not included
- Includes brass handle
- Large European stopper and strainer plate
- Metal handle and stopper
- Fits all 1-1/2" Westbrass cable drives

PC: \$133
 Special Finishes: \$201

Available Finishes:

- Standard Finish
 ■ PC
- Special Finishes
 ■ PB
 ■ PN
 ■ SN
 ■ ORB
 ■ SS
 ■ PCW
 ■ MB



LEVER ASSISTED TRIM FOR CABLE DRIVE BW&O

TD9073-LT

- Lever assisted trim for cable driven bath waste
- Cable, tubes, and rough not included
- Includes brass handle
- Large European stopper and strainer plate
- Metal handle and stopper
- Fits all 1-1/2 in. Westbrass cable drives

PC: \$156
 Special Finishes: \$223

Available Finishes:

- Standard Finish
 ■ PC
- Special Finishes
 ■ PB
 ■ PN
 ■ SN
 ■ ORB
 ■ SS
 ■ PCW
 ■ MB



LEVER ASSISTED 2" CABLE DRIVE BW&O

TD9074

- 2" slip joint Sch 40 cable driven bath waste
- 45" cable assembly for deep tubs
- Includes brass handle, back plate, large stopper, and strainer plate with handle
- Large stopper for improved drainage

PC: \$294
 Special Finishes: \$409

Available Finishes:

- Standard Finish
 ■ PC
- Special Finishes
 ■ PB
 ■ PN
 ■ SN
 ■ ORB
 ■ SS
 ■ PCW
 ■ MB



TERMS & CONDITIONS

PRICING

Prices indicated are Manufacturer Suggested Retail Prices.

Due to increasing costs of brass, raw and finishing materials, prices and specifications are subject to change without notice. Westbrass notifies all customers of pricing errors upon purchase order entry. Any pricing disputes must be settled before the product has shipped. All prices are indicated in United States currency and will be invoiced at prices prevailing at the time of order. Price Lists are available by contacting Westbrass.

TERMS

Net 30 days. A service charge of 1.5% per month (18% APR) will be charged on all invoices outstanding over 30 days.

FREIGHT

All orders will be shipped prepaid and billed except for COD customers; unless the customer wishes to use third party billing. Shipments are F.O.B. Los Angeles, CA. Full freight is allowed on shipments of \$2,000.00 net invoice value, within the continental USA. Full freight is allowed on shipments of \$2,500.00 net invoice value to Hawaii and Alaska. Freight is not allowed on shipments of displays. Shipper reserves the right to ship by method of our choosing.

MINIMUM ORDER

Our minimum order is \$50.00 net per order. Charges will be added to orders of less than \$50.00 to bring the order to the minimum billing of not more than \$10.

LIABILITY

Our liability on any claim, including claims of defective design, workmanship or materials is limited to replacement by shipment of items from our plant, refund or a combination thereof as we determine. Buyer agrees irrevocably to the jurisdiction of the California Courts over its person in the event of litigation. Service of process may be made as provided by California Law or shall be considered effective if sent by certified or registered mail, return receipt requested, postage prepaid.

CLAIMS

Please check your order immediately upon receipt. All claims for shortages, overages, incorrect product, billing errors, etc., must be made within 5 business days of receipt of goods.

RETURNS

Goods cannot be returned without prior authorization and must have a Returned Materials Authorization Number (RMA #) attached with the product. Items sent back to Westbrass without prior authorization will be rejected and returned at the customer's cost. Returns for non-defective merchandise are subject to a minimum 25% restocking fee. Returns Materials Authorization (RMA) must be requested in writing an email or mail within 30 days of delivery. All refunds are subject to inspection of the returned merchandise. Credit will not be issued, under any circumstances, until after the item has been received and inspected. Non-defective returns must be received in saleable condition. No returns on special or custom orders. All returns must be made freight prepaid by sender and the sender must assume all responsibility for shipping. Westbrass reserves the right to limit and/or refuse any returns at their discretion.

DAMAGED OR LOST SHIPMENTS

Items damaged in transit must be rejected upon delivery and immediately returned to Westbrass in its original box. Westbrass will be responsible for filing claims with the carrier. Damaged or lost shipments must be reported within 72 hours of receipt to the shipper of the product in question.

CARE & MAINTENANCE

With the exception of living finishes, all Westbrass decorative finishes are protected by the strongest finish treatments available while maintaining their luxurious appearance. While some finishes are more durable than others, no finish is indestructible. Polished Chrome, Satin Nickel and PVD Polished Brass finishes are the most durable. All other finishes are electroplated; some are then coated to enhance the gloss and durability. "Living" finishes are uncoated, designed to be exposed to the air and other elements, with the intention to age and change in their natural beauty. All of our finishes, plated and living, require some care in use.

TO CLEAN

Do not allow your product to come into contact with any cleansers fortified with ammonia, bleach, grease - cutters or other surfactant chemicals. Soft Scrub®, Dawn Liquid Soap®, Palmolive® or any other combined cleaners contain certain chemical components that will dissolve and remove the finish's protective coating, and eventually the finish itself. Use only plain warm water and mild soap on a soft cloth or sponge. Avoid using any sponge with a scouring pad to clean your product. It is not necessary to rub hard to remove spots.

TO PROTECT

An occasional application of Carnuba wax (without cleaners), like that found in Flitz Faucet Wax®, Turtle Wax for Clear Coat Car Finishes® or McGuire's Premium Wax®, will enhance the finish lustre, reduce hard water spots and add an extra layer of protection to your finish.

WARRANTY

DRAIN & STRAINER FINISHES

All sink and tub/shower drains, strainers and other trims have a **5 year warranty**:

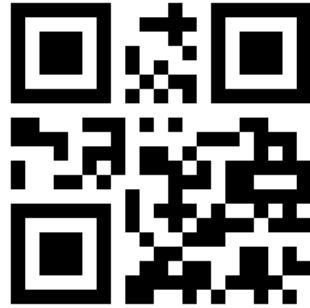
(01) PVD Polished Brass	(07) Satin Nickel	(26) Polished Chrome
(03) Polished Brass	(12) Oil Rubbed Bronze	(50) Powder Coat White
(05) Polished Nickel	(20) Stainless Steel	(62) Matte Black
(18) Brushed Bronze	(19) Champagne Gold	(11) Antique Copper

FUNCTIONAL WARRANTY

The functionality of all products is warranted for a period of **five year**. All warranties are guaranteed to the original purchaser only. Product problems attributable to abuse, misuse, improper installation, hard water, neglected maintenance or accidental damage are not covered by this warranty. Modifying the product in any way voids the warranty. The use of plumber's putty on our products also voids the warranty. Silicone sealing compounds should be used instead. No repairs or replacements will be made under such circumstances except at customer's expense. Liability under warranties expressed or implied is limited to repair or replacement of defective goods only. In no event will Westbrass be liable for incidental or consequential damages (such as labor charges). **This warranty does not cover labor charges, whether based on breach of express or implied warranty, breach of contract, negligence or any other legal theory.**

WESTBRASS

Luxury Plumbing - Est. 1935



2429 E. Olympic Blvd., Los Angeles, CA 90021

(213) 627-8441 ▪ orders@westbrass.com ▪ www.westbrass.com

